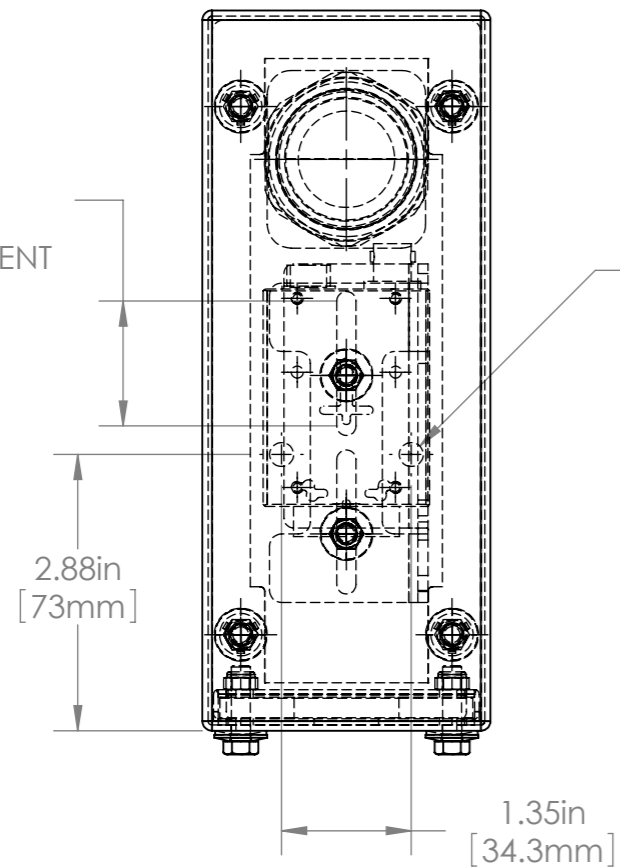
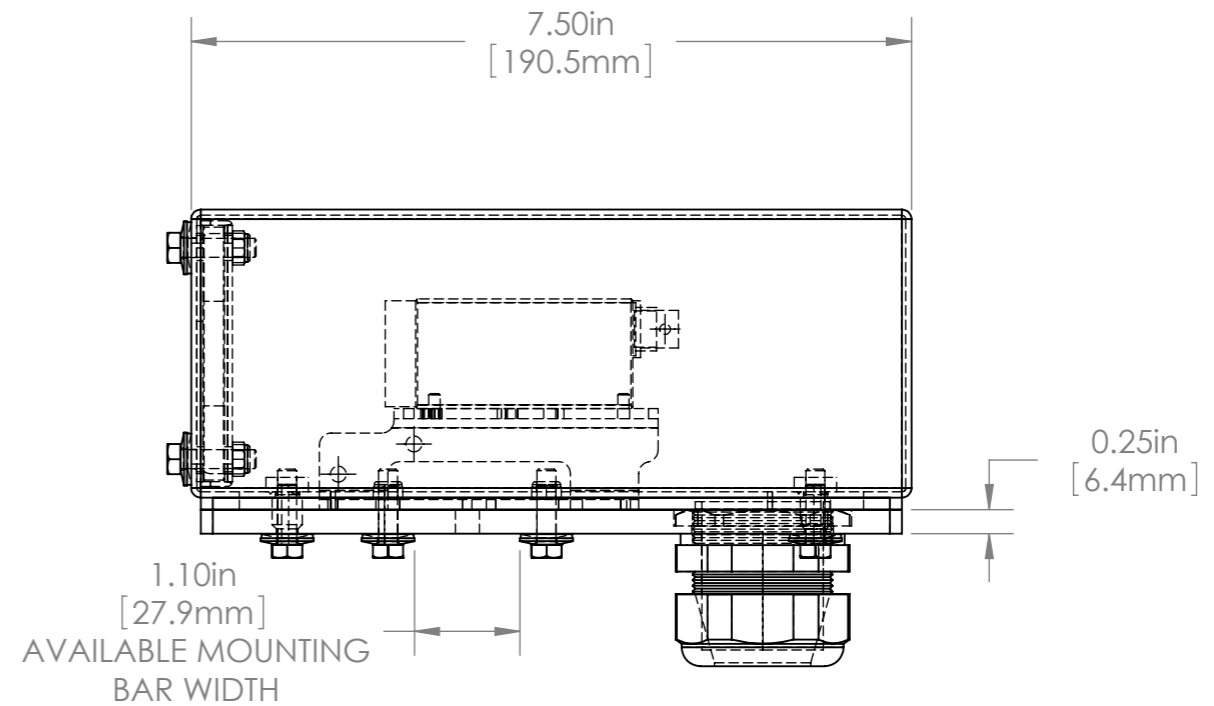
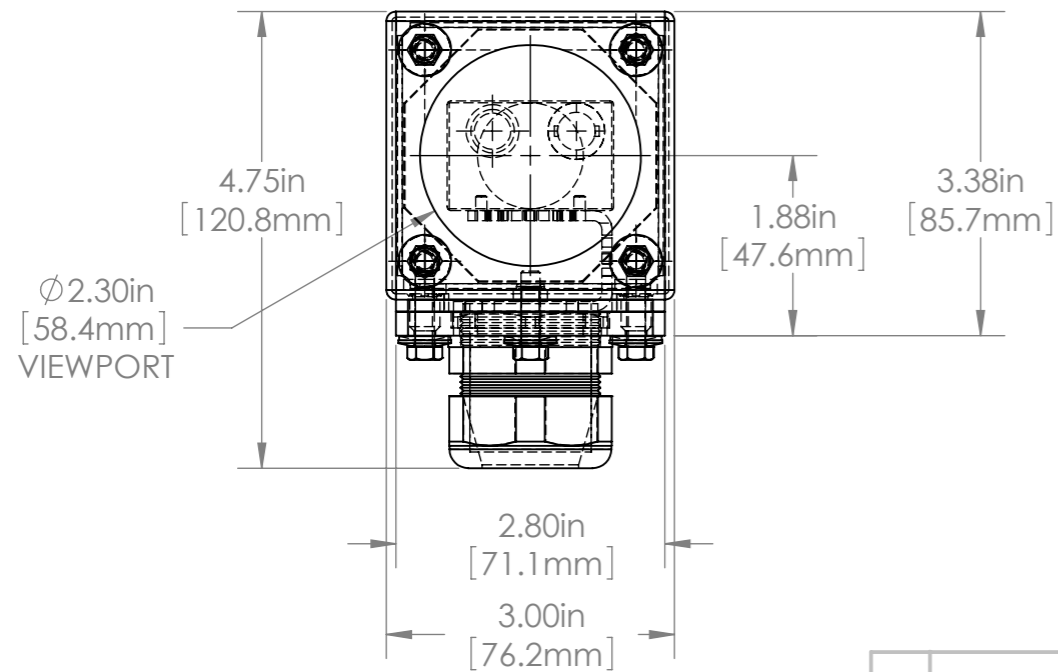
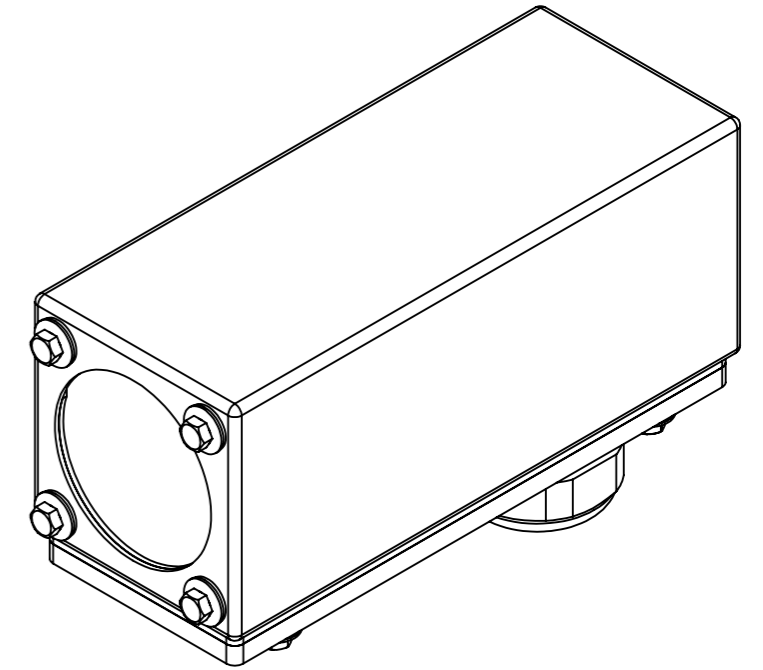


1.30in  
[33mm]  
TOTAL CAMERA  
POSITION ADJUSTMENT



2  $\varnothing$ 0.25in  
[6.4mm]  
MOUNTING HOLES  
SEALING WASHERS INCLUDED



MATERIAL:  
304 STAINLESS STEEL BODY  
6061 T6 HARDCOAT ANODIZED ALUMINUM BASE  
EPDM GASKETS  
GLASS WINDOW

				UNLESS OTHERWISE SPECIFIED: DIMENSIONS ARE IN INCHES SURFACE FINISH: TOLERANCES: .000= +/- 0.005" .00= +/- 0.010"		FINISH: DEBUR AND BREAK SHARP EDGES		Allison Park Group, Inc. (APG) 4055 Alpha Drive Allison Park, PA 15101 USA		DO NOT SCALE DRAWING		REVISION	
				LINEAR:				Phone +1 (412) 487-8211 Fax +1 (412) 486-3157		TITLE:		30D-AF UNIVESAL ARM GLASS VIEWPORT	
				DRAWN SCHUBERT		SIGNATURE		www.apgvision.com		DWG NO.		A3	
				CHK'D				MATERIAL:		SCALE: 1:2		SHEET 1 OF 1	
				APPVD				SEE NOTE AT LEFT					
				MFG				WEIGHT:					
				Q.A									
				NOTES:									
NO.	CHANGE	DATE	INIT.										