

A

B

C

D

1

2

3

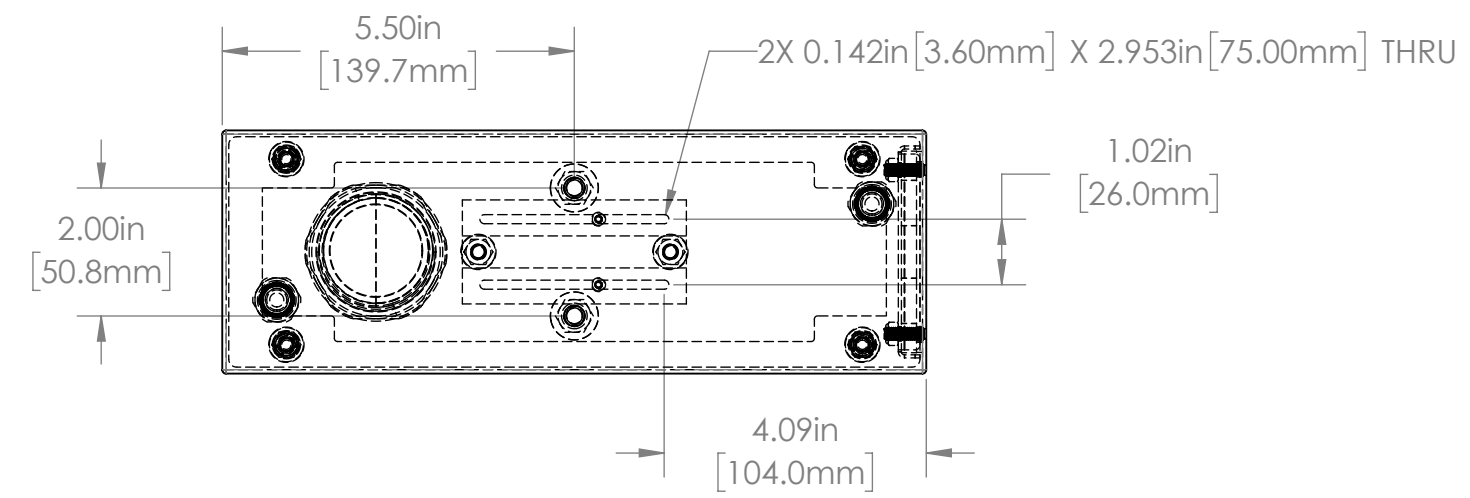
4

5

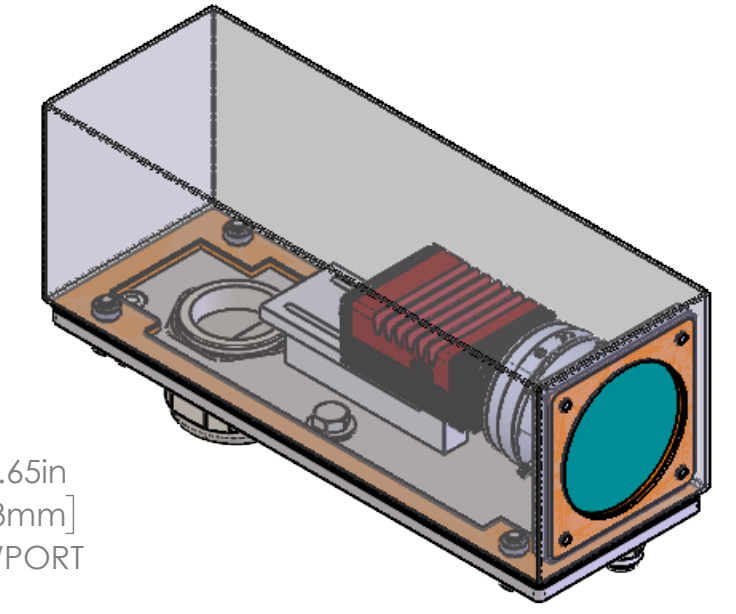
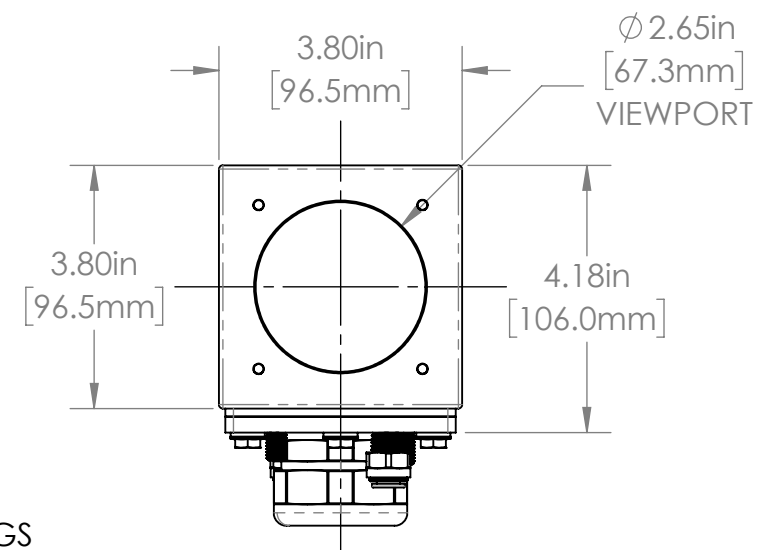
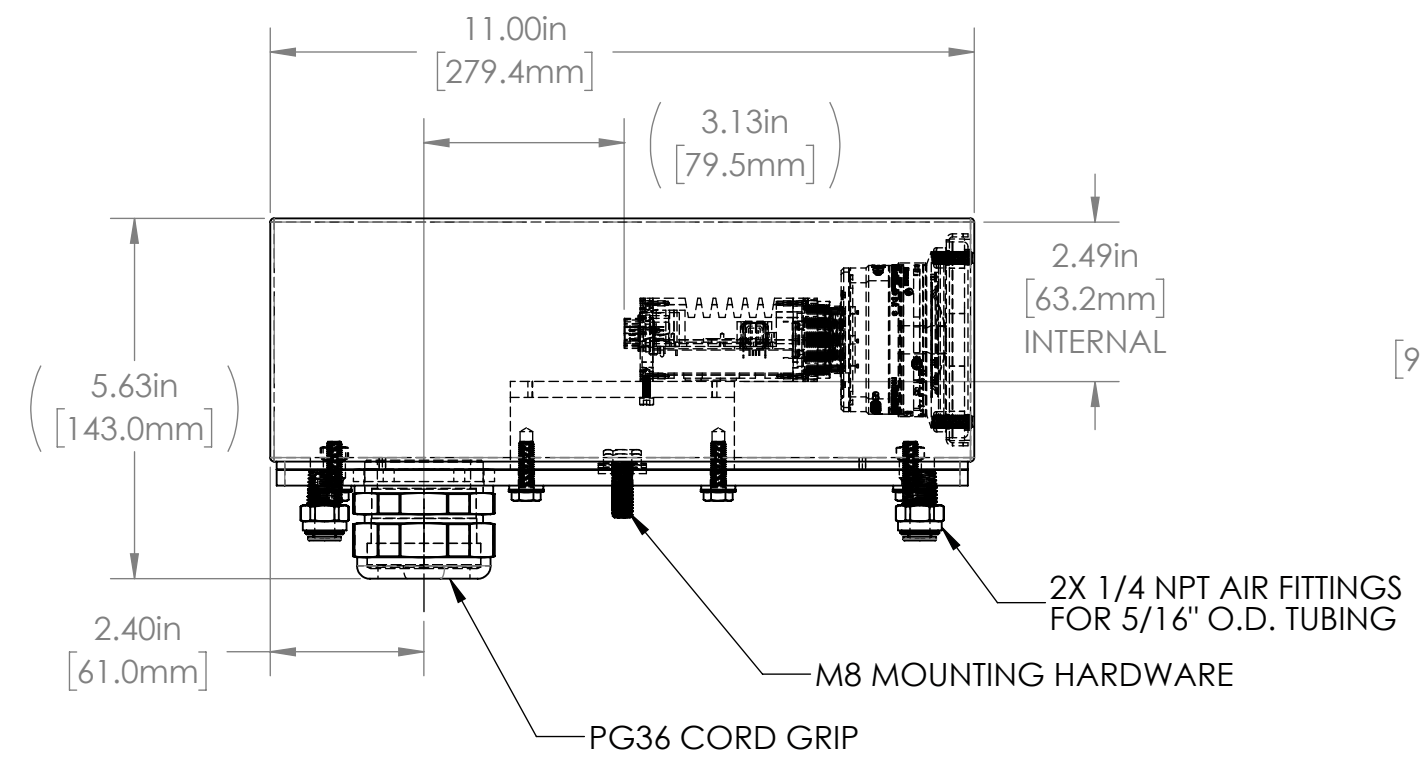
6

REVISIONS

ZONE	REV.	DESCRIPTION	DATE	APPROVED
	A	RELEASED FOR CUSTOMER APPROVAL	8/16/2021	DMM



CAMERA & LENS NOT SHOWN FOR CLARITY



SHOWN WITH TAMRON M23FM06 LENS

38S SERIES PROPERTIES TABLE		
ENVIRONMENT RATING	IP68*	
	(*RATING MAY CHANGE IF INSTALLER MILLS CABLE GLAND OUTSIDE OF TOLERANCE)	
COMPONENT	MATERIAL	FINISH
BODY/BASE	316 SS	BURNISHED
VIEWPORT	CLEAR ACRYLIC	ABR2
GASKET	SILICONE	NONE
ARM/ADAPTOR	6061 ALUMINUM	NONE
HARDWARE	316 SS - EXTERNAL, 18-8 SS - INTERNAL	NONE

TOLERANCES UNLESS OTHERWISE SPECIFIED			
MACHINING		SHEET METAL	
X.X	0.0250"	HOLE TO HOLE (SAME SURFACE)	
X.XX	0.0100"	X.X	0.030"
X.XXX	0.0050"	X.XX	0.010"
X.XXXX	0.0005"	X.XXX	0.005"
ANGULAR	0.5°	HOLE TO FOLDED EDGE	
DEBURR	ALL	X.X	0.035"
		X.XX	0.025"
		X.XXX	0.015"
		FOLD TO FOLD	
		X.X	0.045"
		X.XX	0.035"
		X.XXX	0.020"
		ANGULAR 1.0°	

APG Vision LLC
4055 Alpha Drive
Allison Park, PA 15101 USA
Phone +1 (412) 487-8211
apgvision.com

apgvision

DESCRIPTION:
38S 11IN BODY SEALED ENCLOSURE WITH AIR FITTINGS FOR ALLIED VISION PROSILICA GT-2000 NIR WITH TAMRON LENSES

MATERIAL: SEE BOM

FINISH: SEE BOM

DRAWN BY: DMM DATE: 8/16/2021 SCALE: 1:3 SHT-SIZE: B APPROX. WEIGHT (LBS): 6.8304

CHECKED BY: DMM DATE: 8/16/2021 PART NUMBER: 38S-GA REVISION: A

Sheet1 of 2

1

2

3

4

5

6

A

A

B

B

C

C

D

D

1

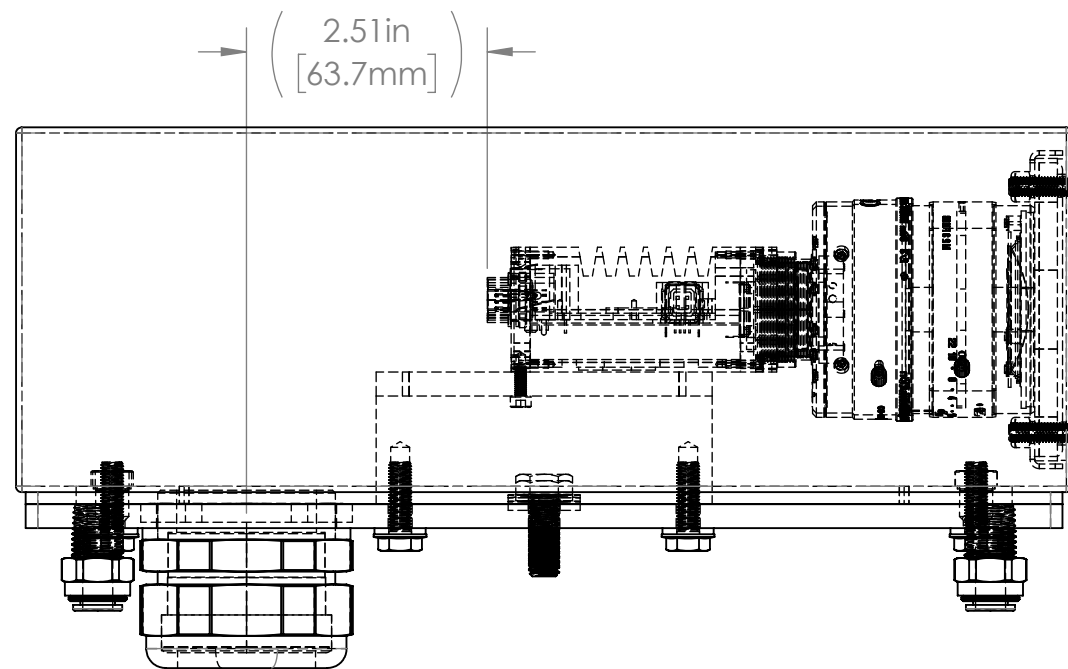
2

3

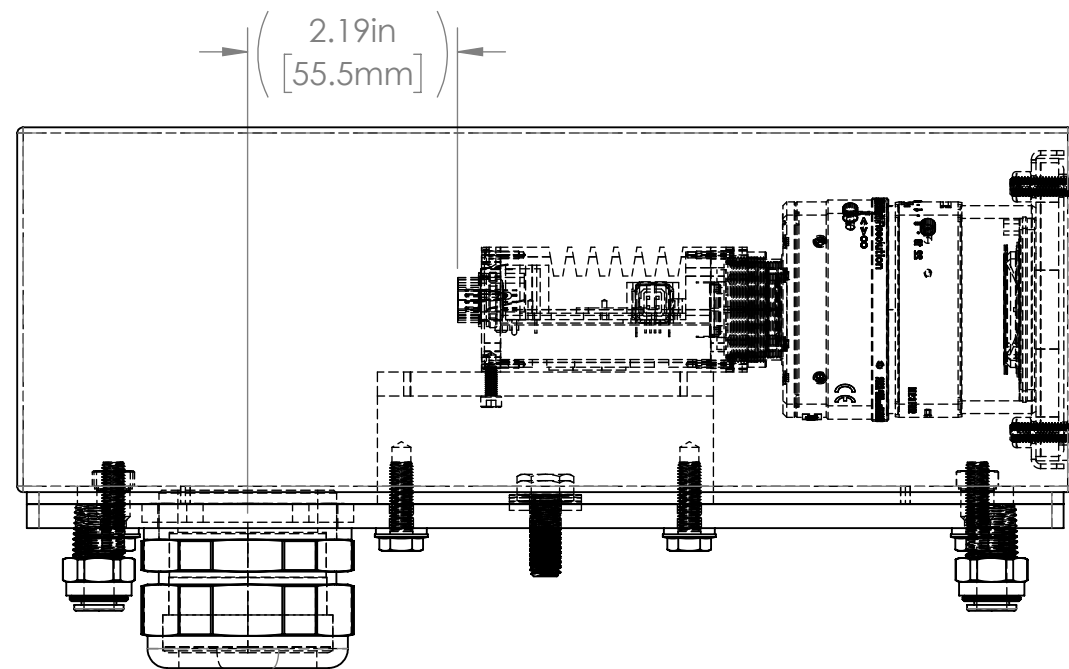
4

5

6



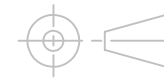
SHOWN WITH TAMRON M23FM08 LENS



SHOWN WITH TAMRON M23FM12 LENS

TOLERANCES UNLESS OTHERWISE SPECIFIED

MACHINING		SHEET METAL	
X.X	0.0250"	HOLE TO HOLE (SAME SURFACE)	
X.XX	0.0100"	X.X	0.030"
X.XXX	0.0050"	X.XX	0.010"
X.XXXX	0.0005"	X.XXX	0.005"
ANGULAR	0.5°	HOLE TO FOLDED EDGE	
DEBURR ALL		X.X	0.035"
		X.XX	0.025"
		X.XXX	0.015"
		FOLD TO FOLD	
		X.X	0.045"
		X.XX	0.035"
		X.XXX	0.020"
			ANGULAR 1.0°



THIS PRINT IS THE PROPERTY OF APG VISION LLC. THE INFORMATION CONTAINED HEREIN IS CONFIDENTIAL. IT IS NOT TRANSFERABLE. IT IS FURNISHED WITH THE CLEAR UNDERSTANDING THAT IT IS NOT TO BE TRACED, REPRODUCED OR USED IN ANY PROCESS OF MANUFACTURING WITHOUT WRITTEN PERMISSION FROM THE OWNER AND IS RETURNABLE UPON DEMAND. ANY INFRINGEMENT UPON THE PATENT RIGHTS SHOWN HEREIN, WHETHER IN PART OR WHOLE, WILL BE PROSECUTED.

AS PART OF OUR POLICY OF CONTINUING DEVELOPMENT, APG VISION LLC RESERVES THE RIGHT TO ALTER SPECIFICATIONS WITHOUT PRIOR NOTICE.

APG Vision LLC
4055 Alpha Drive
Allison Park, PA 15101 USA
Phone +1 (412) 487-8211
apgvision.com



DESCRIPTION:
38S 11IN BODY SEALED ENCLOSURE WITH AIR FITTINGS FOR ALLIED VISION PROSILICA GT-2000 NIR WITH TAMRON LENSES

MATERIAL: SEE BOM

FINISH: SEE BOM

DRAWN BY: DMM	DATE: 8/16/2021	SCALE: 1:2	SHT-SIZE: B	APPROX. WEIGHT (LBS): 6.8925
------------------	--------------------	---------------	----------------	---------------------------------

CHECKED BY: DMM	DATE: 8/16/2021	PART NUMBER: 38S-GA	REVISION: A
--------------------	--------------------	------------------------	----------------

1

2

3

4

5

6