

1 2 3 4 5 6

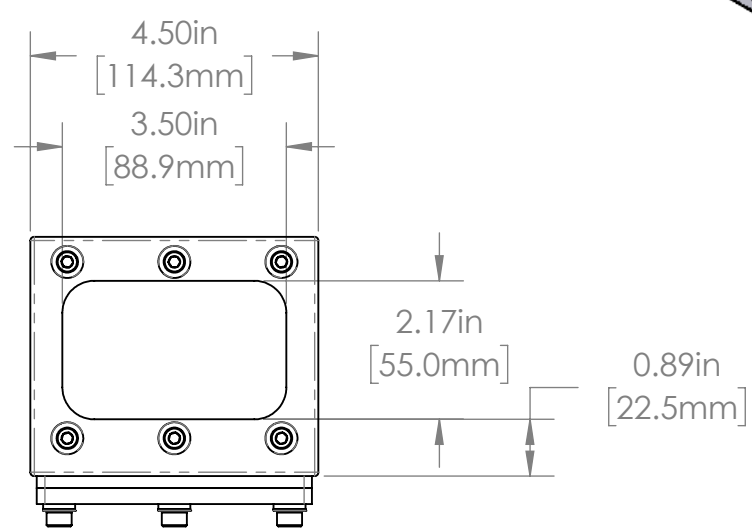
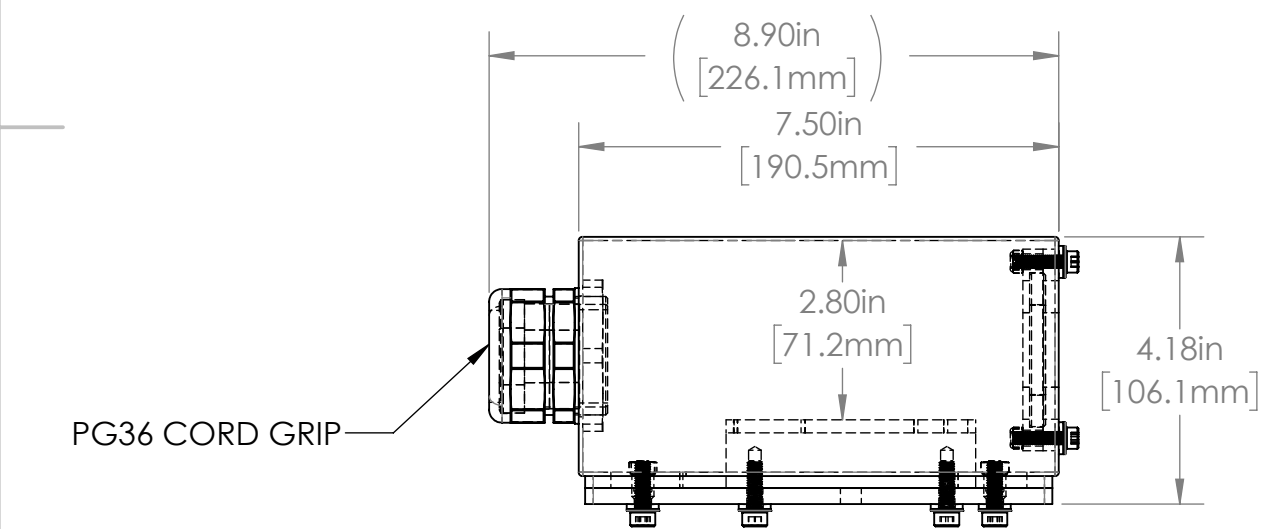
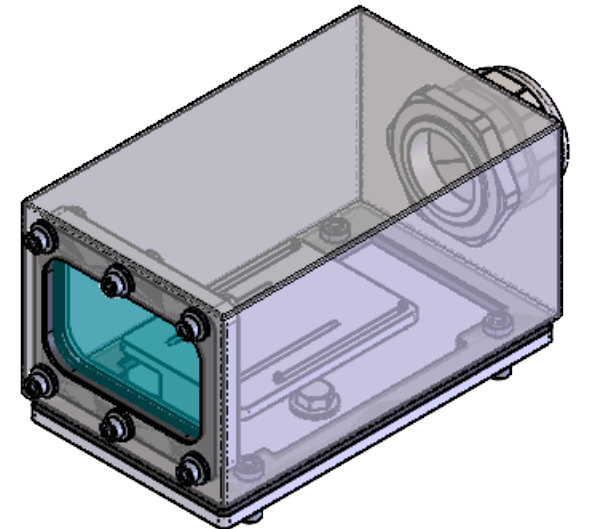
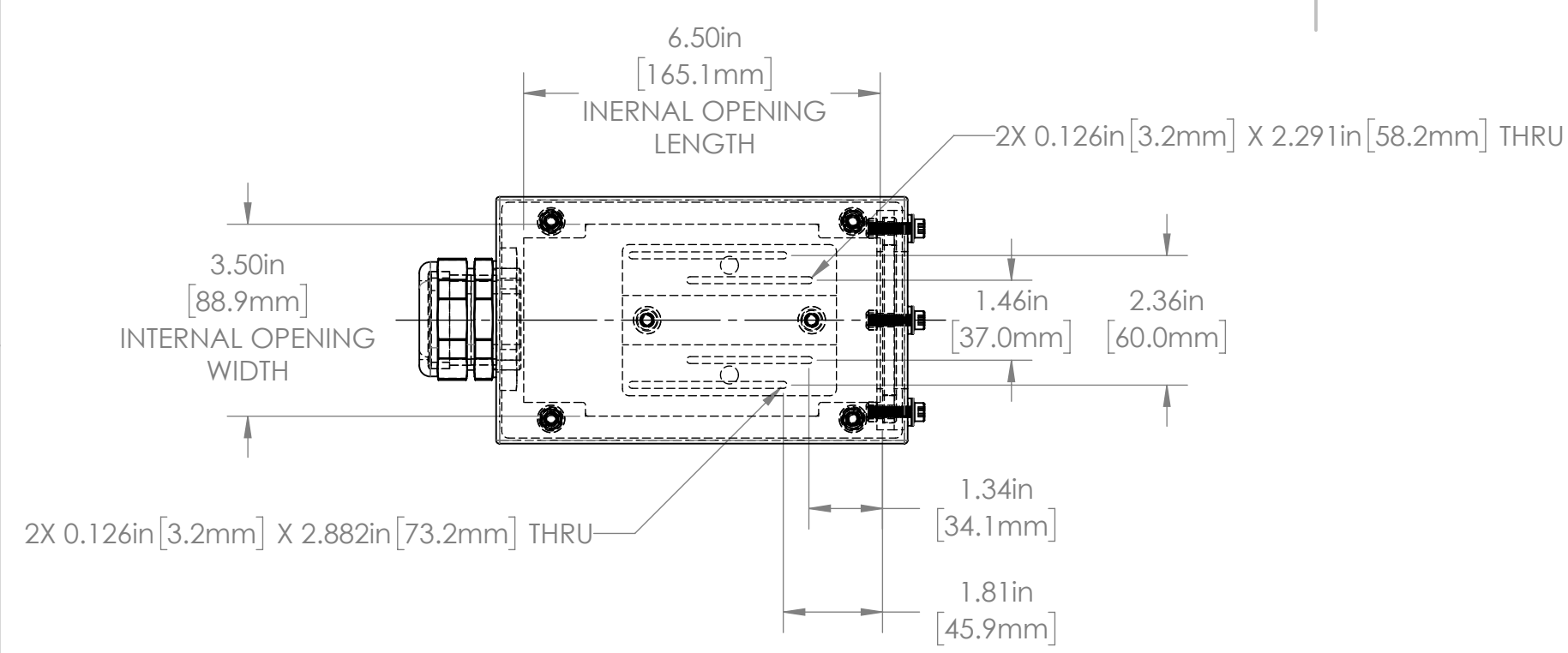
A A

B B

C C

D D

| REVISIONS | | | | |
|-----------|------|-------------------------|------------|----------|
| ZONE | REV. | DESCRIPTION | DATE | APPROVED |
| | A | RELEASED FOR PRODUCTION | 11/19/2021 | DMM |



42D SERIES PROPERTIES TABLE

| | | |
|---------------------------|--|-------------------------|
| ENVIRONMENT RATING | IP64* | |
| | (*RATING MAY CHANGE IF INSTALLER MILLS CABLE GLAND OUTSIDE OF TOLERANCE) | |
| COMPONENT | MATERIAL | FINISH |
| BODY | 304 SS | BURNISHED |
| BASE | 6061 ALUMINUM | CLEAR HARDCOAT ANODIZED |
| VIEWPORT | SODA LIME GLASS | NONE |
| GASKET | EPDM FOAM | NONE |
| ARM/ADAPTOR | 6061 ALUMINUM | NONE |
| HARDWARE | 18-8 SS | NONE |

TOLERANCES UNLESS OTHERWISE SPECIFIED

| MACHINING | | SHEET METAL | |
|------------|---------|-----------------------------|--------|
| X.X | 0.0250" | HOLE TO HOLE (SAME SURFACE) | |
| X.XX | 0.0100" | X.X | 0.030" |
| X.XXX | 0.0050" | X.XX | 0.010" |
| X.XXXX | 0.0005" | X.XXX | 0.005" |
| ANGULAR | 0.5° | HOLE TO FOLDED EDGE | |
| DEBURR ALL | | X.X | 0.035" |
| | | X.XX | 0.025" |
| | | X.XXX | 0.015" |
| | | FOLD TO FOLD | |
| | | X.X | 0.045" |
| | | X.XX | 0.035" |
| | | X.XXX | 0.020" |
| | | ANGULAR 1.0° | |

THIS PRINT IS THE PROPERTY OF APG VISION LLC. THE INFORMATION CONTAINED HEREIN IS CONFIDENTIAL. IT IS NOT TRANSFERABLE. IT IS FURNISHED WITH THE CLEAR UNDERSTANDING THAT IT IS NOT TO BE TRACED, REPRODUCED OR USED IN ANY PROCESS OF MANUFACTURING WITHOUT WRITTEN PERMISSION FROM THE OWNER AND IS RETURNABLE UPON DEMAND. ANY INFRINGEMENT UPON THE PATENT RIGHTS SHOWN HEREIN, WHETHER IN PART OR WHOLE, WILL BE PROSECUTED.

AS PART OF OUR POLICY OF CONTINUING DEVELOPMENT, APG VISION LLC RESERVES THE RIGHT TO ALTER SPECIFICATIONS WITHOUT PRIOR NOTICE.

APG Vision LLC
4055 Alpha Drive
Allison Park, PA 15101 USA
Phone +1 (412) 487-8211
apgvision.com

apgvision

DESCRIPTION:
42D 7.5IN SEALED ENCLOSURE GLASS VIEWPORT 37mm & 60mm O.C.

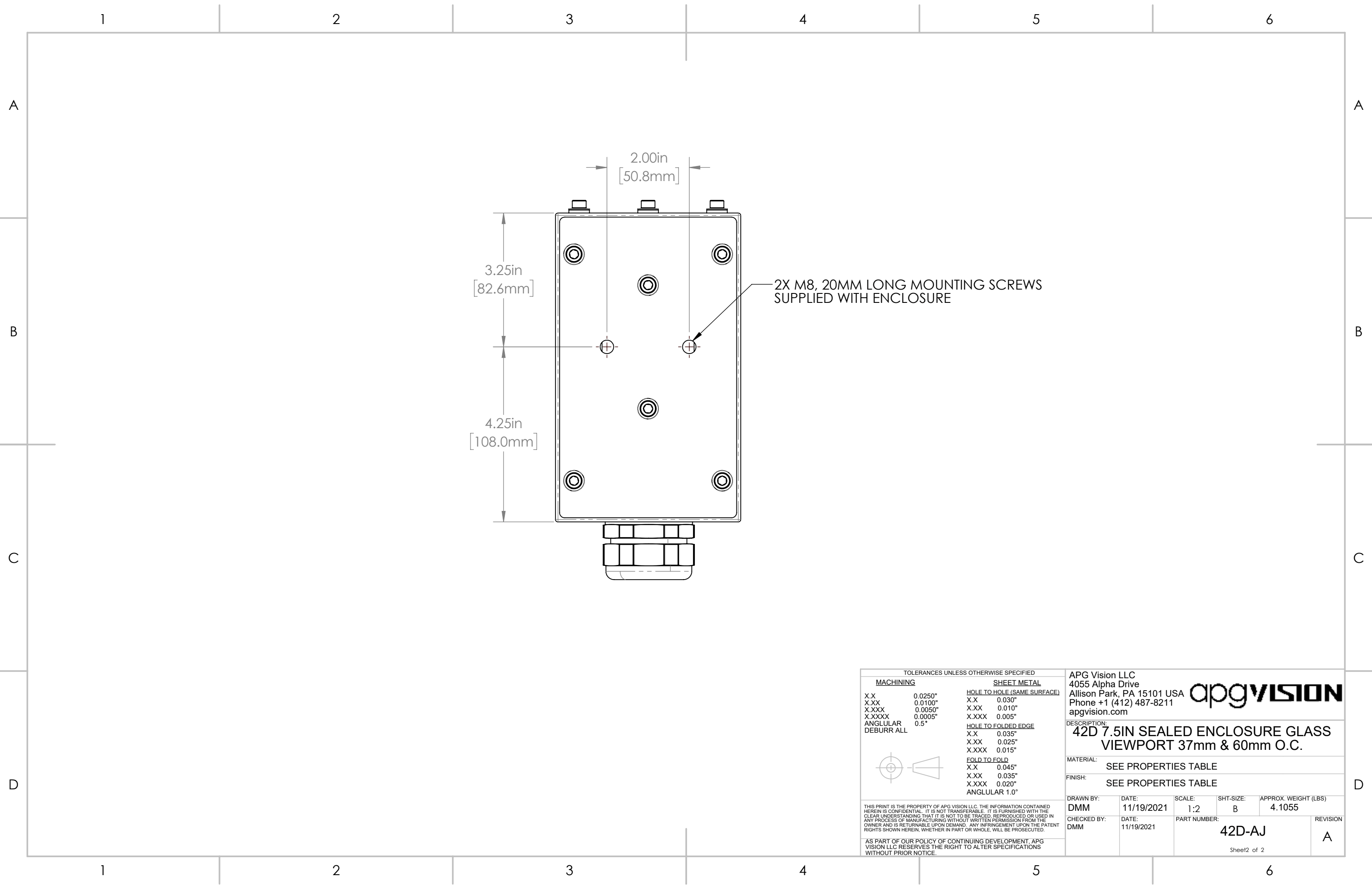
MATERIAL: SEE PROPERTIES TABLE

FINISH: SEE PROPERTIES TABLE

| | | | | |
|--------------------|---------------------|-------------------------------|----------------|--------------------------------|
| DRAWN BY: DMM | DATE: 11/19/2021 | SCALE: 1:3 | SHT-SIZE: B | APPROX. WEIGHT (LBS) 4.1055 |
| CHECKED BY: DMM | DATE: 11/19/2021 | PART NUMBER: 42D-AJ | | REVISION A |

Sheet1 of 2

1 2 3 4 5 6



2X M8, 20MM LONG MOUNTING SCREWS
SUPPLIED WITH ENCLOSURE

TOLERANCES UNLESS OTHERWISE SPECIFIED

| MACHINING | | SHEET METAL | |
|------------|---------|-----------------------------|--------|
| X.X | 0.0250" | HOLE TO HOLE (SAME SURFACE) | |
| X.XX | 0.0100" | X.X | 0.030" |
| X.XXX | 0.0050" | X.XX | 0.010" |
| X.XXXX | 0.0005" | X.XXX | 0.005" |
| ANGULAR | 0.5° | HOLE TO FOLDED EDGE | |
| DEBURR ALL | | X.X | 0.035" |
| | | X.XX | 0.025" |
| | | X.XXX | 0.015" |
| | | FOLD TO FOLD | |
| | | X.X | 0.045" |
| | | X.XX | 0.035" |
| | | X.XXX | 0.020" |
| | | ANGULAR 1.0° | |

THIS PRINT IS THE PROPERTY OF APG VISION LLC. THE INFORMATION CONTAINED HEREIN IS CONFIDENTIAL. IT IS NOT TRANSFERABLE. IT IS FURNISHED WITH THE CLEAR UNDERSTANDING THAT IT IS NOT TO BE TRACED, REPRODUCED OR USED IN ANY PROCESS OF MANUFACTURING WITHOUT WRITTEN PERMISSION FROM THE OWNER AND IS RETURNABLE UPON DEMAND. ANY INFRINGEMENT UPON THE PATENT RIGHTS SHOWN HEREIN, WHETHER IN PART OR WHOLE, WILL BE PROSECUTED.

AS PART OF OUR POLICY OF CONTINUING DEVELOPMENT, APG VISION LLC RESERVES THE RIGHT TO ALTER SPECIFICATIONS WITHOUT PRIOR NOTICE.

APG Vision LLC
4055 Alpha Drive
Allison Park, PA 15101 USA
Phone +1 (412) 487-8211
apgvision.com

apgvision

DESCRIPTION:
42D 7.5IN SEALED ENCLOSURE GLASS VIEWPORT 37mm & 60mm O.C.

MATERIAL: SEE PROPERTIES TABLE

FINISH: SEE PROPERTIES TABLE

| | | | | |
|--------------------|---------------------|-------------------------------|----------------|---------------------------------|
| DRAWN BY: DMM | DATE: 11/19/2021 | SCALE: 1:2 | SHT-SIZE: B | APPROX. WEIGHT (LBS): 4.1055 |
| CHECKED BY: DMM | DATE: 11/19/2021 | PART NUMBER: 42D-AJ | | REVISION: A |

Sheet2 of 2