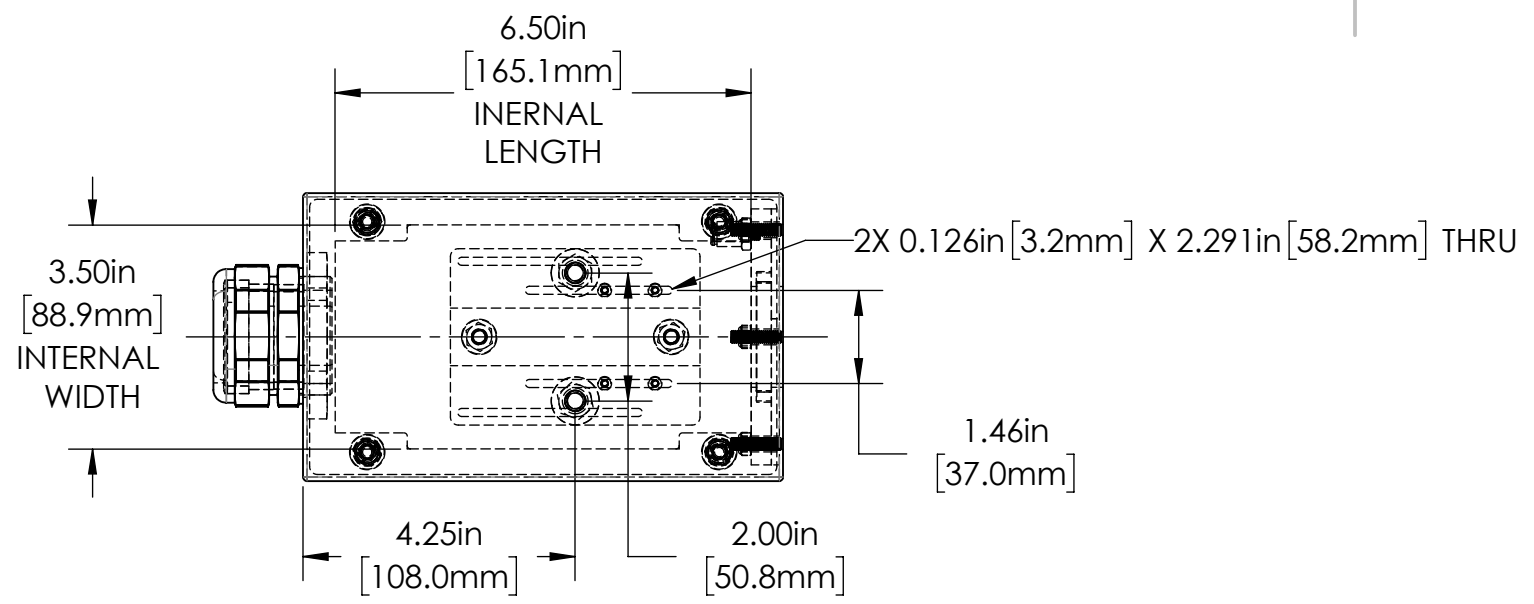


1 2 3 4 5 6

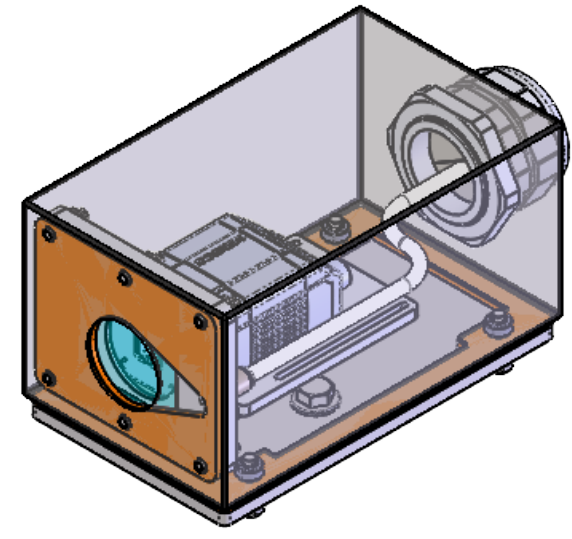
A



REVISIONS				
ZONE	REV.	DESCRIPTION	DATE	APPROVED
	A	RELEASED FOR PRODUCTION	9/1/2022	DMM

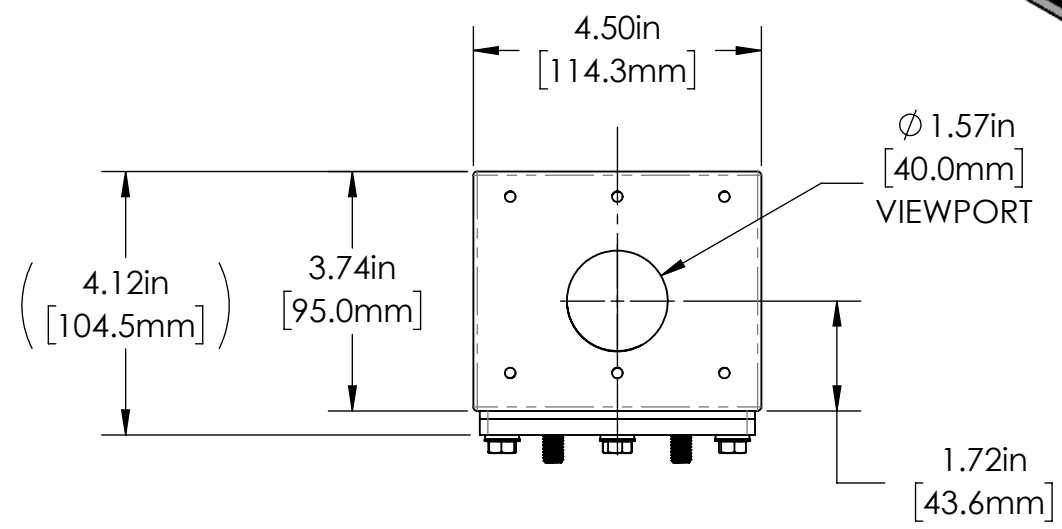
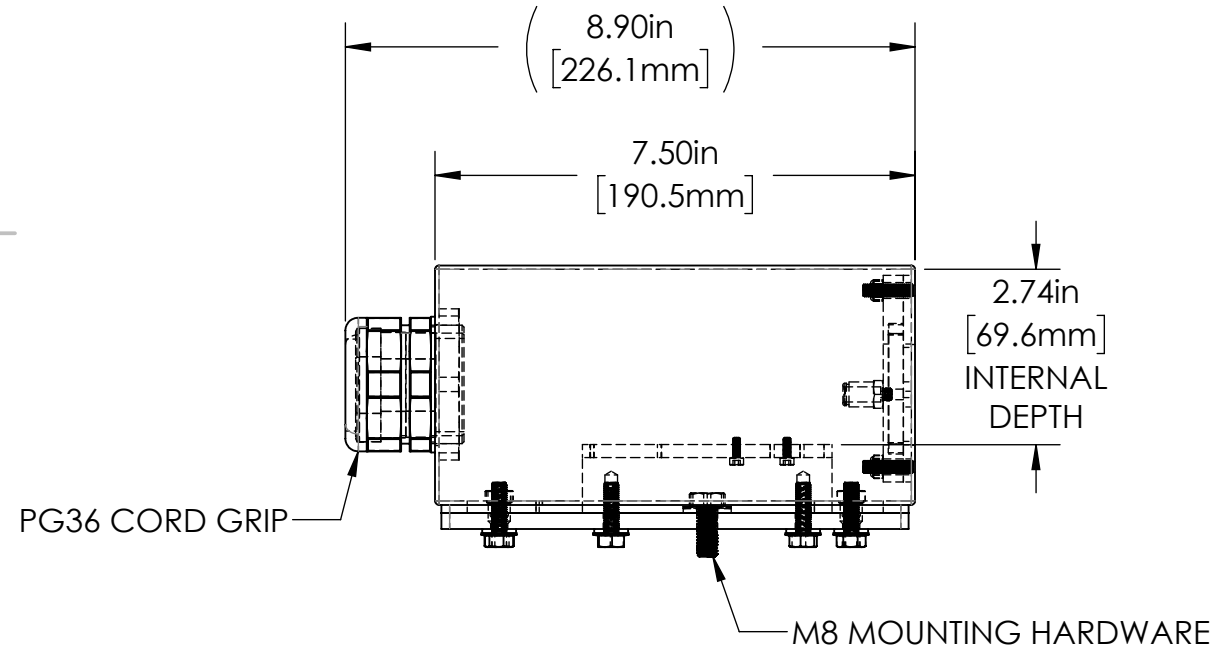
A

B



B

C



C

42S SERIES PROPERTIES TABLE

ENVIRONMENT RATING	IP68*	
	(*RATING MAY CHANGE IF INSTALLER MILLS CABLE GLAND OUTSIDE OF TOLERANCE)	
COMPONENT	MATERIAL	FINISH
BODY/BASE	316 SS	BURNISHED
VIEWPORT	CLEAR FLOWCOAT ACRYLIC	ABR2
GASKET	SILICONE	NONE
ARM/ADAPTER	6061 ALUMINUM	CLEAR HARDCOAT ANODIZED
HARDWARE	316 SS - EXTERNAL, 18-8 SS - INTERNAL	NONE

D

MACHINING		SHEET METAL	
X.X	0.0250"	HOLE TO HOLE (SAME SURFACE)	
X.XX	0.0100"	X.X	0.030"
X.XXX	0.0050"	X.XX	0.010"
X.XXXX	0.0005"	X.XXX	0.005"
ANGULAR	0.5°	HOLE TO FOLDED EDGE	
DEBURR ALL		X.X	0.035"
		X.XX	0.025"
		X.XXX	0.015"
		FOLD TO FOLD	
		X.X	0.045"
		X.XX	0.035"
		X.XXX	0.020"
		ANGULAR 1.0°	

APG Vision LLC
4055 Alpha Drive
Allison Park, PA 15101 USA
Phone +1 (412) 487-8211
apgvision.com

apgvision

DESCRIPTION:
42S 7.5IN ENCLOSURE, ACRYLIC VIEWPORT WITH 40mm DIAMETER CUTOUT AIR CURTAIN FACEPLATE

MATERIAL: SEE BOM

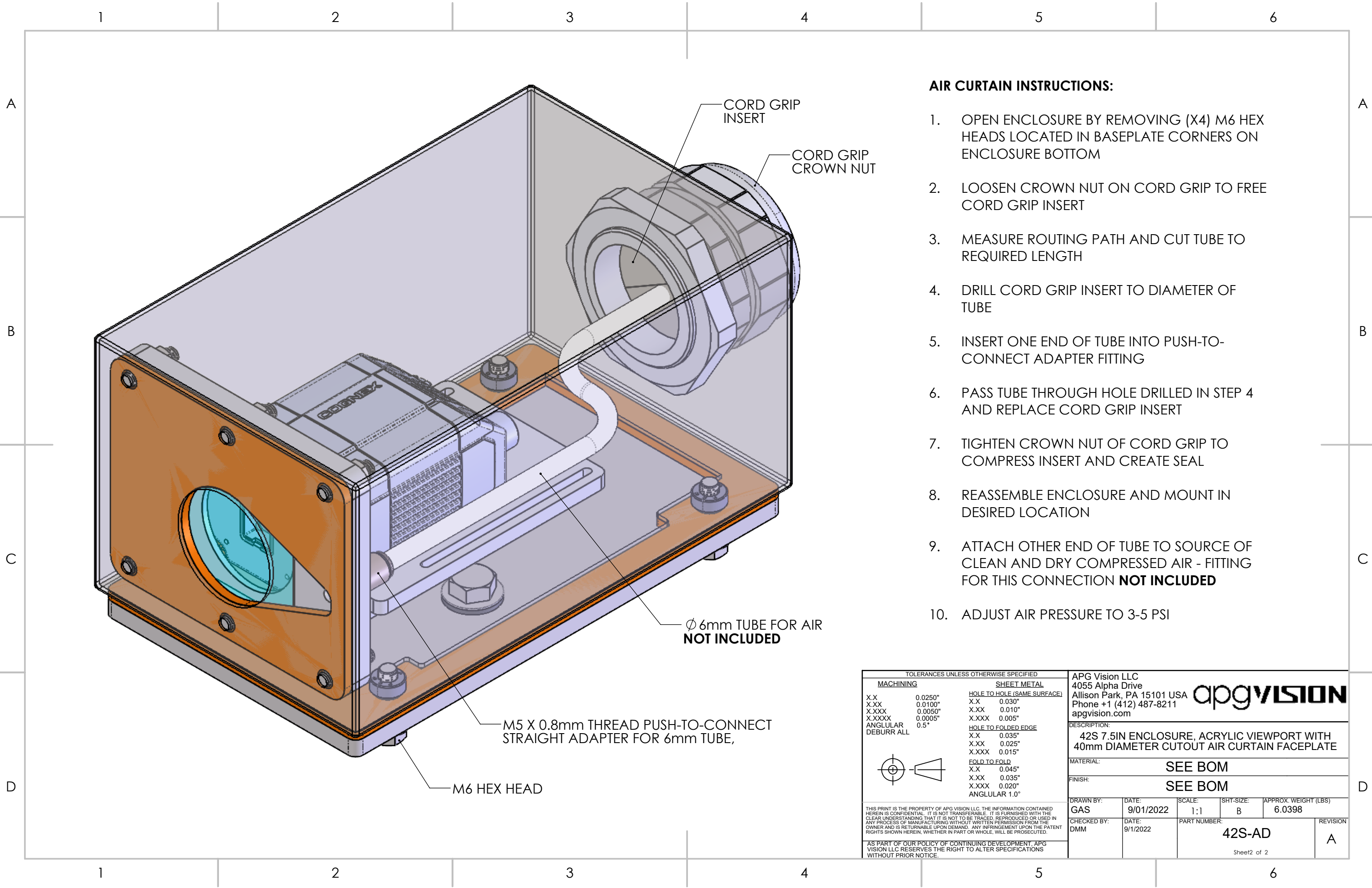
FINISH: SEE BOM

DRAWN BY: GAS	DATE: 9/01/2022	SCALE: 1:3	SHT-SIZE: B	APPROX. WEIGHT (LBS): 6.0398
CHECKED BY: DMM	DATE: 9/1/2022	PART NUMBER: 42S-AD		REVISION: A

Sheet 1 of 2

D

1 2 3 4 5 6



AIR CURTAIN INSTRUCTIONS:

1. OPEN ENCLOSURE BY REMOVING (X4) M6 HEX HEADS LOCATED IN BASEPLATE CORNERS ON ENCLOSURE BOTTOM
2. LOOSEN CROWN NUT ON CORD GRIP TO FREE CORD GRIP INSERT
3. MEASURE ROUTING PATH AND CUT TUBE TO REQUIRED LENGTH
4. DRILL CORD GRIP INSERT TO DIAMETER OF TUBE
5. INSERT ONE END OF TUBE INTO PUSH-TO-CONNECT ADAPTER FITTING
6. PASS TUBE THROUGH HOLE DRILLED IN STEP 4 AND REPLACE CORD GRIP INSERT
7. TIGHTEN CROWN NUT OF CORD GRIP TO COMPRESS INSERT AND CREATE SEAL
8. REASSEMBLE ENCLOSURE AND MOUNT IN DESIRED LOCATION
9. ATTACH OTHER END OF TUBE TO SOURCE OF CLEAN AND DRY COMPRESSED AIR - FITTING FOR THIS CONNECTION **NOT INCLUDED**
10. ADJUST AIR PRESSURE TO 3-5 PSI

Ø 6mm TUBE FOR AIR NOT INCLUDED

M5 X 0.8mm THREAD PUSH-TO-CONNECT STRAIGHT ADAPTER FOR 6mm TUBE,

M6 HEX HEAD

MACHINING		SHEET METAL	
X.X	0.0250"	HOLE TO HOLE (SAME SURFACE)	
X.XX	0.0100"	X.X	0.030"
X.XXX	0.0050"	X.XX	0.010"
X.XXXX	0.0005"	X.XXX	0.005"
ANGULAR	0.5°	HOLE TO FOLDED EDGE	
DEBURR ALL		X.X	0.035"
		X.XX	0.025"
		X.XXX	0.015"
		FOLD TO FOLD	
		X.X	0.045"
		X.XX	0.035"
		X.XXX	0.020"
			ANGULAR 1.0°

APG Vision LLC
 4055 Alpha Drive
 Allison Park, PA 15101 USA
 Phone +1 (412) 487-8211
 apgvision.com

apgvision

DESCRIPTION:
 42S 7.5IN ENCLOSURE, ACRYLIC VIEWPORT WITH 40mm DIAMETER CUTOUT AIR CURTAIN FACEPLATE

MATERIAL: **SEE BOM**

FINISH: **SEE BOM**

DRAWN BY: GAS	DATE: 9/01/2022	SCALE: 1:1	SHT-SIZE: B	APPROX. WEIGHT (LBS) 6.0398
CHECKED BY: DMM	DATE: 9/1/2022	PART NUMBER: 42S-AD		REVISION A

AS PART OF OUR POLICY OF CONTINUING DEVELOPMENT, APG VISION LLC RESERVES THE RIGHT TO ALTER SPECIFICATIONS WITHOUT PRIOR NOTICE.

Sheet2 of 2