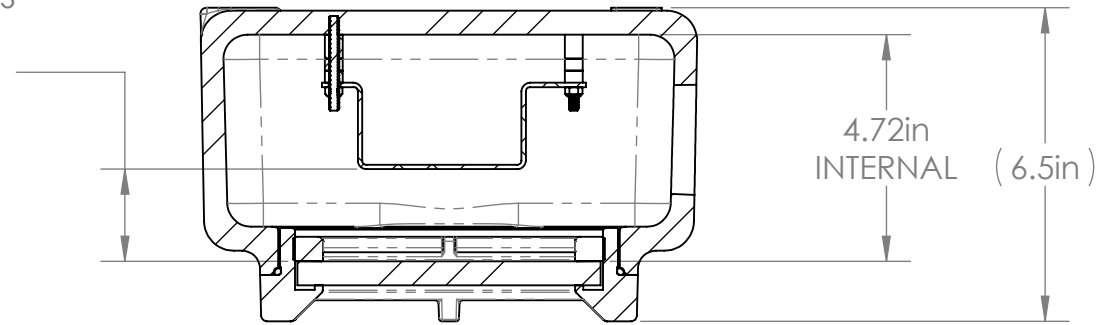


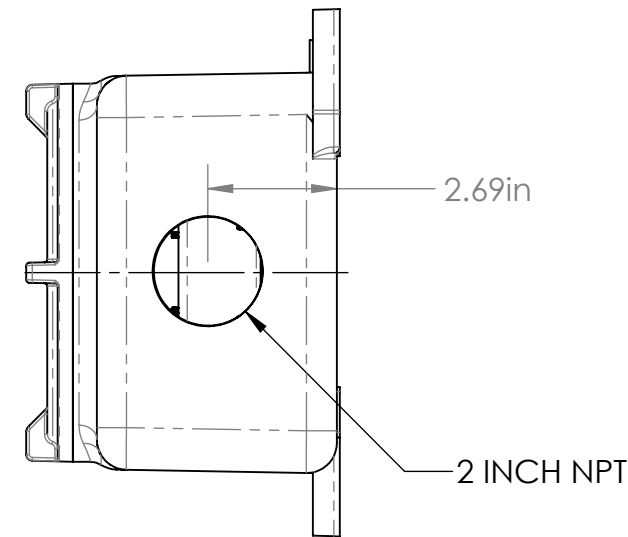
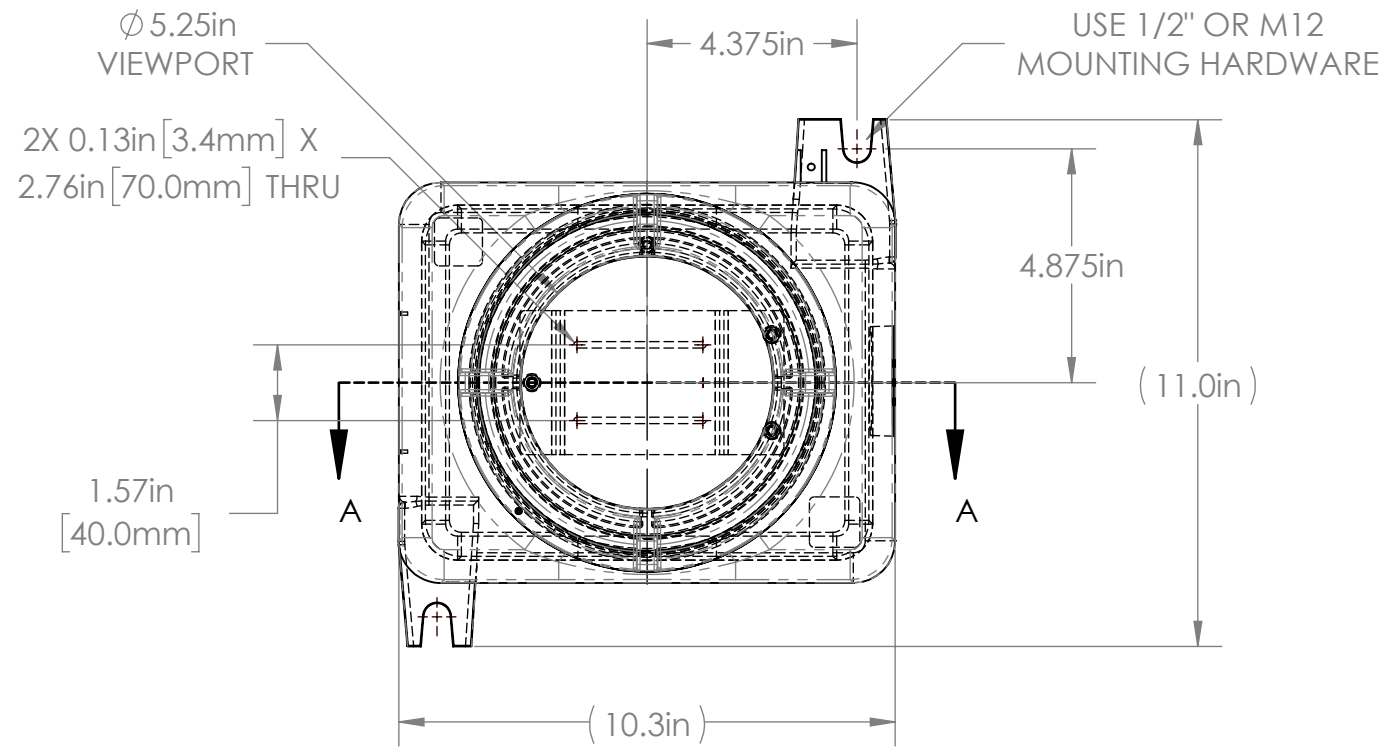
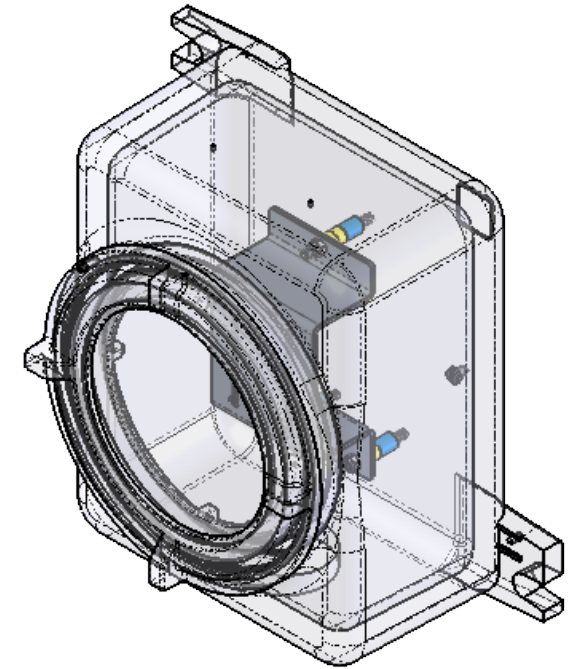
STANDARD APPROVALS: UL/cUL CLASS I, DIVISION 1, GROUP B; NEMA TYPES 4X/7/9  
 GLASS IMPACT TESTED TO UL STANDARDS FOR HAZARDOUS LOCATIONS  
 ATEX CERTIFIED

REVISIONS				
ZONE	REV.	DESCRIPTION	DATE	APPROVED
	A	PREVIOUSLY CALLED 22-068 RELEASED FOR PRODUCTION	8/23/2023	DMM

ADJUSTABLE WITH  
 PROVIDED SPACERS  
 0.92in MIN  
 1.17in  
 1.42in  
 1.67in  
 1.92in MAX



SECTION A-A



**L4 SERIES PROPERTIES TABLE**

ENVIRONMENT RATING	IP66*	
COMPONENT	MATERIAL	FINISH
BODY	CAST ALUMINUM	POWDERCOAT
VIEWPORT	TEMPERED SODA-LIME FLOAT GLASS	NONE
GASKET	BUNA-N	NONE
ARM/ADAPTER	5052 ALUMINUM	NONE
HARDWARE	18-8 SS	AS SUPPLIED

TOLERANCES UNLESS OTHERWISE SPECIFIED

MACHINING		SHEET METAL	
X.X	0.0250"	HOLE TO HOLE (SAME SURFACE)	
X.XX	0.0100"	X.X	0.030"
X.XXX	0.0050"	X.XX	0.010"
X.XXXX	0.0005"	X.XXX	0.005"
ANGULAR	0.5°	X.XXX	0.015"
DEBURR	ALL	HOLE TO FOLDED EDGE	
		X.X	0.035"
		X.XX	0.025"
		X.XXX	0.015"
		FOLD TO FOLD	
		X.X	0.045"
		X.XX	0.035"
		X.XXX	0.020"
		ANGULAR 1.0°	

THIS PRINT IS THE PROPERTY OF APG VISION LLC. THE INFORMATION CONTAINED HEREIN IS CONFIDENTIAL. IT IS NOT TRANSFERABLE. IT IS FURNISHED WITH THE CLEAR UNDERSTANDING THAT IT IS NOT TO BE TRACED, REPRODUCED OR USED IN ANY PROCESS OF MANUFACTURING WITHOUT WRITTEN PERMISSION FROM THE OWNER AND IS RETURNABLE UPON DEMAND. ANY INFRINGEMENT UPON THE PATENT RIGHTS SHOWN HEREIN, WHETHER IN PART OR WHOLE, WILL BE PROSECUTED.

AS PART OF OUR POLICY OF CONTINUING DEVELOPMENT, APG VISION LLC RESERVES THE RIGHT TO ALTER SPECIFICATIONS WITHOUT PRIOR NOTICE.

APG Vision LLC  
 4055 Alpha Drive  
 Allison Park, PA 15101 USA  
 Phone +1 (412) 487-8211  
 apgvision.com

**apgvision**

DESCRIPTION:  
**EXPLOSION PROOF ENCLOSURE FOR KEYENCE IV3**

MATERIAL: **SEE PROPERTIES TABLE**

FINISH: **SEE PROPERTIES TABLE**

DRAWN BY:	DATE:	SCALE:	SHT-SIZE:	APPROX. WEIGHT (LBS)
TWD	8/23/2023	1:4	B	17.0366
CHECKED BY:	DATE:	PART NUMBER:	REVISION	
DMM	8/23/2023	L4-BU	A	

Sheet 1 of 1