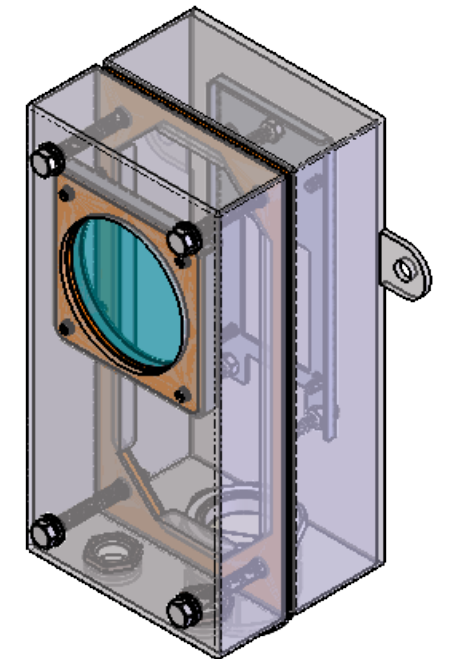
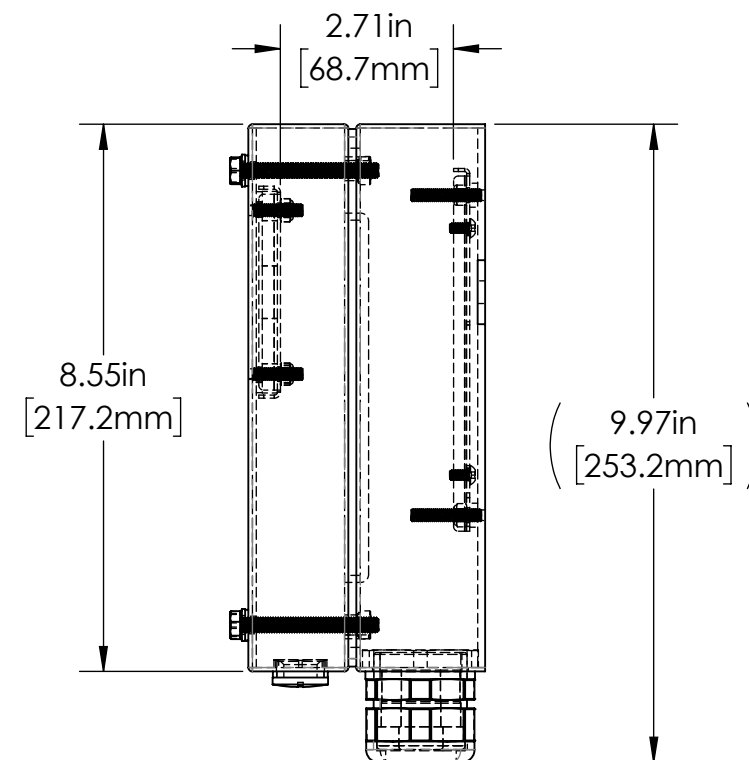
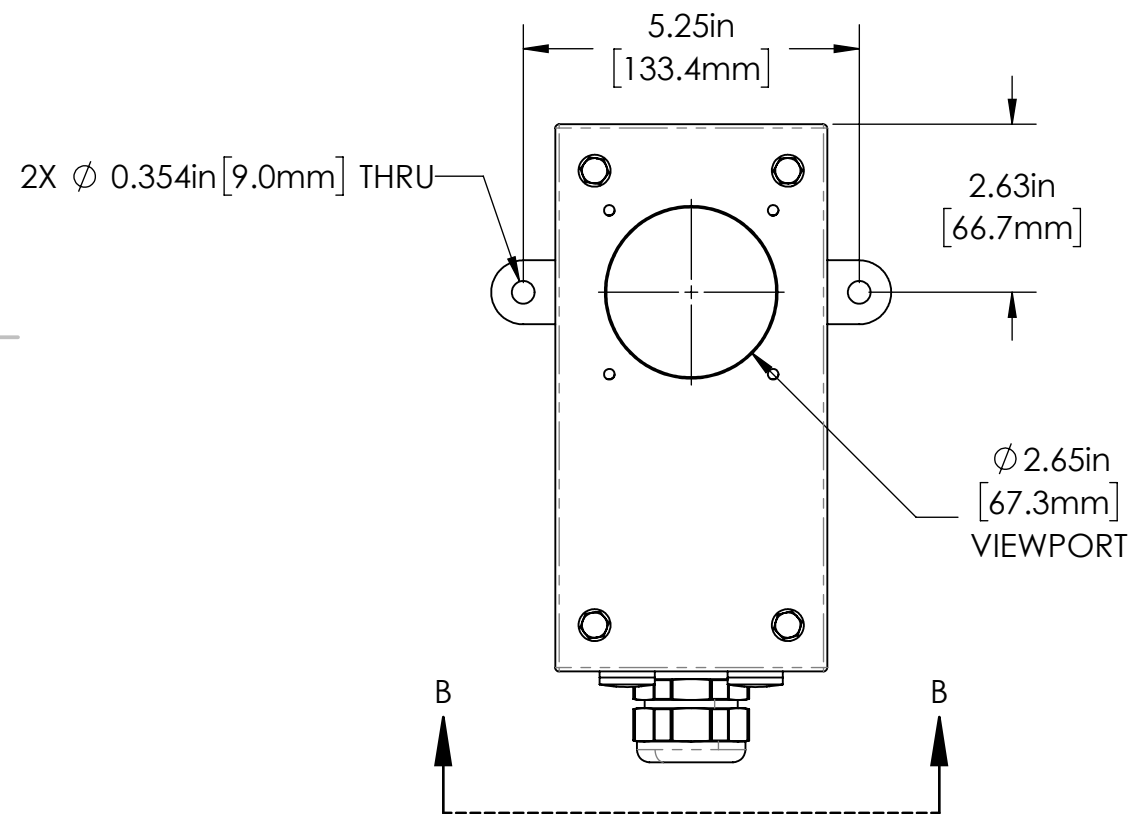
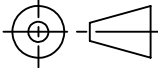


REVISIONS				
ZONE	REV.	DESCRIPTION	DATE	APPROVED
	A	RELEASED FOR PRODUCTION	11/5/2021	DMM



L7 SERIES PROPERTIES TABLE

ENVIRONMENT RATING	IP68*	
	(*RATING MAY CHANGE IF INSTALLER MILLS CABLE GLAND OUTSIDE OF TOLERANCE)	
COMPONENT	MATERIAL	FINISH
BODY	316 SS	BURNISHED
VIEWPORT	CLEAR FLOWCOAT ACRYLIC / SODA LIME GLASS	ABR2 / NONE
GASKET	SILICONE	NONE
ARM/ADAPTOR	6061 ALUM	NONE
HARDWARE	316 SS - EXTERNAL, 18-8 SS - INTERNAL	NONE

TOLERANCES UNLESS OTHERWISE SPECIFIED	
<u>MACHINING</u>	<u>SHEET METAL</u>
X.X	0.0250"
X.XX	0.0100"
X.XXX	0.0050"
X.XXXX	0.0005"
ANGULAR	0.5°
DEBURR ALL	
	
	<u>HOLE TO HOLE (SAME SURFACE)</u> X.X 0.030" X.XX 0.010" X.XXX 0.005" <u>HOLE TO FOLDED EDGE</u> X.X 0.035" X.XX 0.025" X.XXX 0.015" <u>FOLD TO FOLD</u> X.X 0.045" X.XX 0.035" X.XXX 0.020" ANGULAR 1.0°
<p>THIS PRINT IS THE PROPERTY OF APG VISION LLC. THE INFORMATION CONTAINED HEREIN IS CONFIDENTIAL. IT IS NOT TRANSFERABLE. IT IS FURNISHED WITH THE CLEAR UNDERSTANDING THAT IT IS NOT TO BE REPRODUCED OR USED IN ANY PROCESS OF MANUFACTURING WITHOUT WRITTEN PERMISSION FROM THE OWNER AND IS RETURNABLE UPON DEMAND. ANY INFRINGEMENT OF THE PATENT RIGHTS SHOWN HEREIN, WHETHER IN PART OR WHOLE, WILL BE PROSECUTED.</p> <p>AS PART OF OUR POLICY OF CONTINUING DEVELOPMENT, APG VISION LLC RESERVES THE RIGHT TO ALTER SPECIFICATIONS WITHOUT PRIOR NOTICE.</p>	

APG Vision LLC
4055 Alpha Drive
Allison Park, PA 15101 USA
Phone +1 (412) 487-8211
apgvision.com

DESCRIPTION:	L7 ENCLOSURE WITH REG UPPER & LOWER BODIES FOR COGNEX 5000 & DVT 500
--------------	--

MATERIAL:	SEE PROPERTIES TABLE
-----------	----------------------

FINISH: SEE PROPERTIES TABLE

DRAWN BY: GAS	DATE: 11/4/2021	SCALE: 1:3	SHT-SIZE: B	APPROX. WEIGHT (LBS) 5.1285
CHECKED BY: DMM	DATE: 11/5/2021	PART NUMBER: L7-AA		
				REVISION A

A

B

C

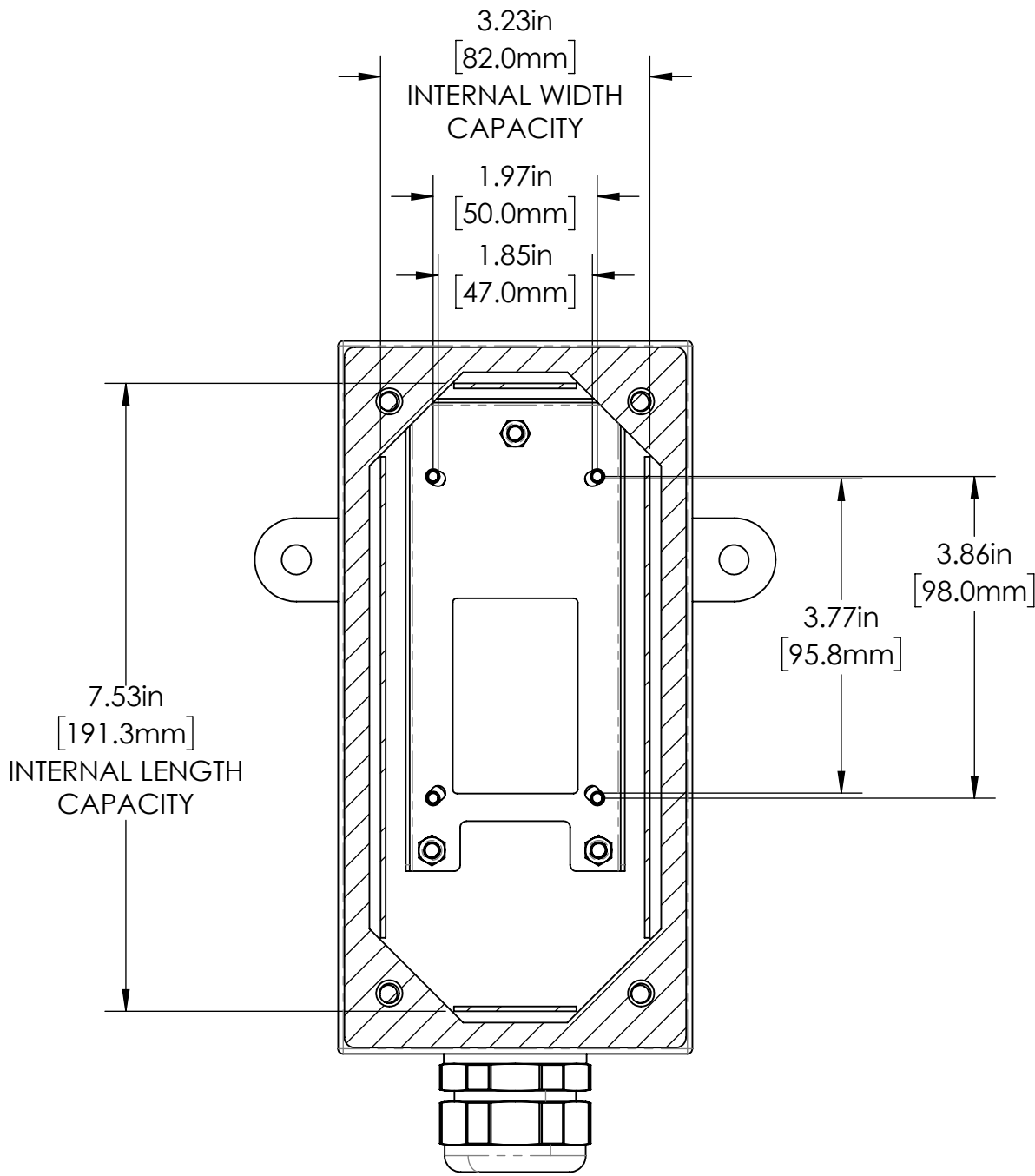
D

A

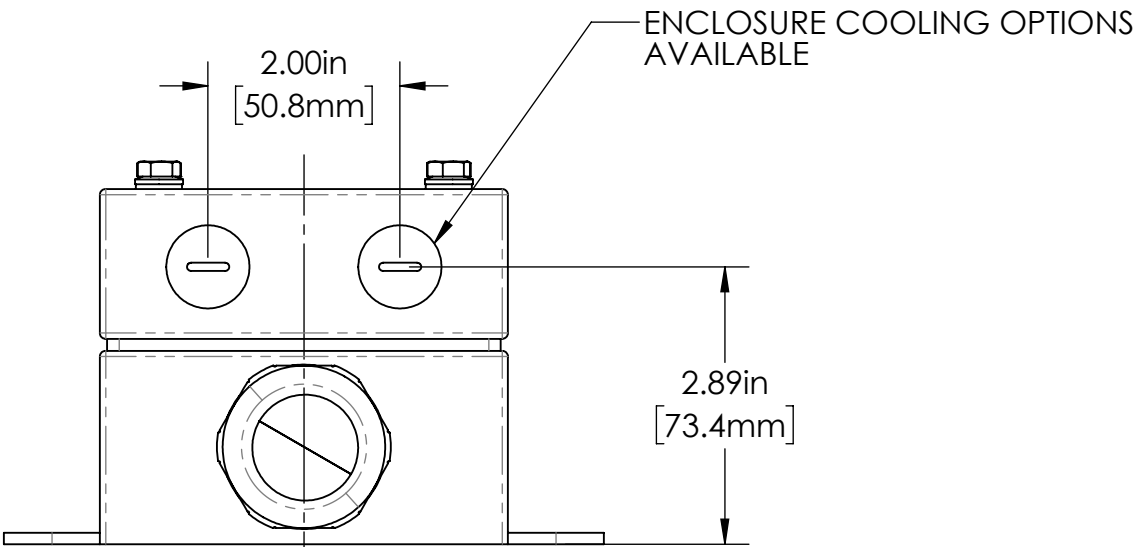
B

C

D



SECTION A-A



SECTION B-B

TOLERANCES UNLESS OTHERWISE SPECIFIED			
MACHINING		SHEET METAL	
X.X	0.0250"	HOLE TO HOLE (SAME SURFACE)	
X.XX	0.0100"	X.X	0.030"
X.XXX	0.0050"	X.XX	0.010"
X.XXXX	0.0005"	X.XXX	0.005"
ANGULAR	0.5°	HOLE TO FOLDED EDGE	
DEBURR ALL		X.X	0.035"
		X.XX	0.025"
		X.XXX	0.015"
		FOLD TO FOLD	
		X.X	0.045"
		X.XX	0.035"
		X.XXX	0.020"
		ANGULAR 1.0°	

THIS PRINT IS THE PROPERTY OF APG VISION LLC. THE INFORMATION CONTAINED HEREIN IS CONFIDENTIAL. IT IS NOT TRANSFERABLE. IT IS FURNISHED WITH THE CLEAR UNDERSTANDING THAT IT IS NOT TO BE TRACED, REPRODUCED OR USED IN ANY PROCESS OF MANUFACTURING WITHOUT WRITTEN PERMISSION FROM THE OWNER AND IS RETURNABLE UPON DEMAND. ANY INFRINGEMENT UPON THE PATENT RIGHTS SHOWN HEREIN, WHETHER IN PART OR WHOLE, WILL BE PROSECUTED.

AS PART OF OUR POLICY OF CONTINUING DEVELOPMENT, APG VISION LLC RESERVES THE RIGHT TO ALTER SPECIFICATIONS WITHOUT PRIOR NOTICE.

APG Vision LLC 4055 Alpha Drive Allison Park, PA 15101 USA Phone +1 (412) 487-8211 apgvision.com				
DESCRIPTION: L7 ENCLOSURE WITH REG UPPER & LOWER BODIES FOR COGNEX 5000 & DVT 500				
MATERIAL: SEE PROPERTIES TABLE				
FINISH: SEE PROPERTIES TABLE				
DRAWN BY: GAS	DATE: 11/4/2021	SCALE: 1:2	SHT-SIZE: B	APPROX. WEIGHT (LBS) 5.1285
CHECKED BY: DMM	DATE: 11/5/2021	PART NUMBER: L7-AA		REVISION A

Sheet2 of 2