

A

B

C

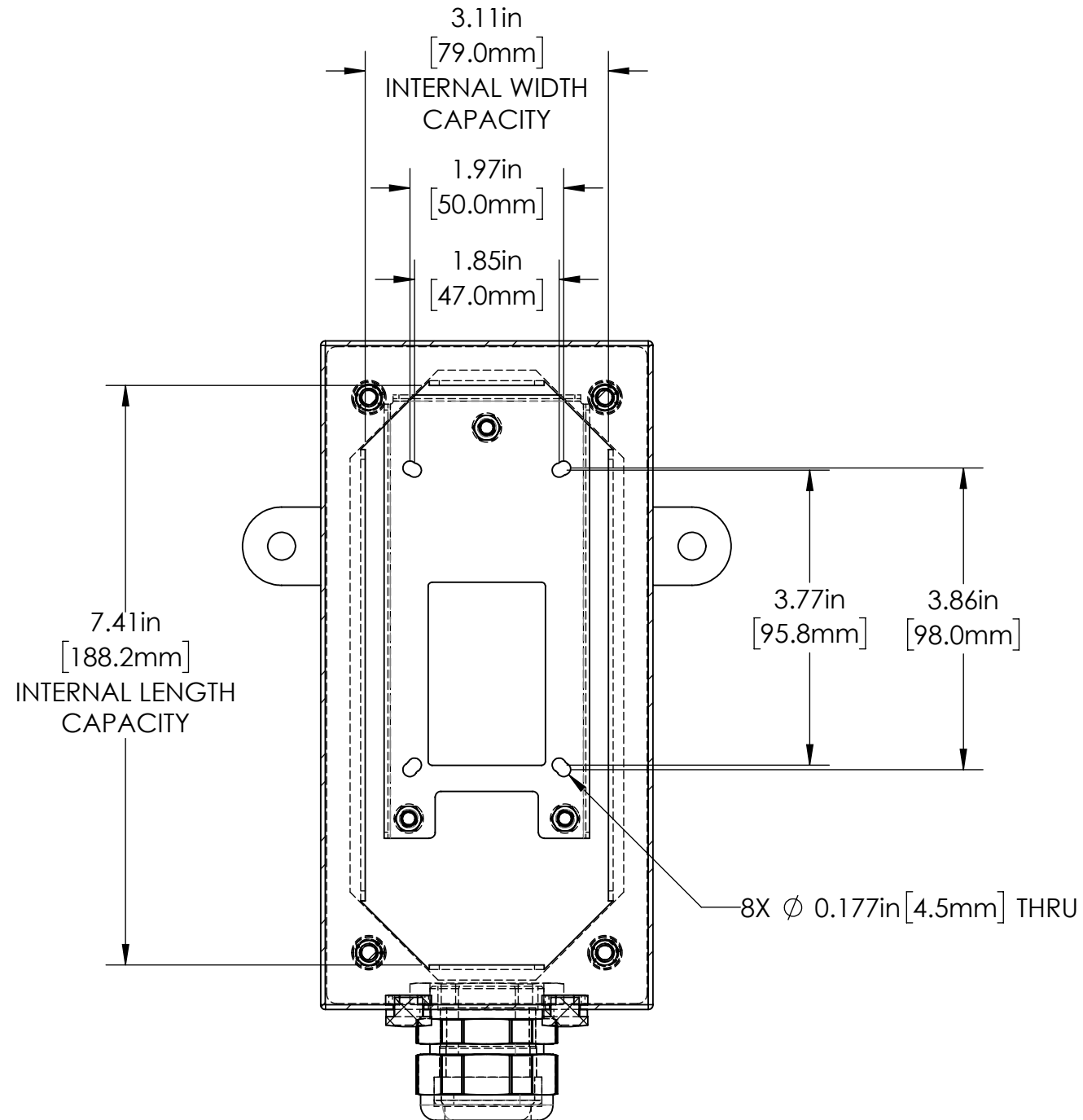
D

A

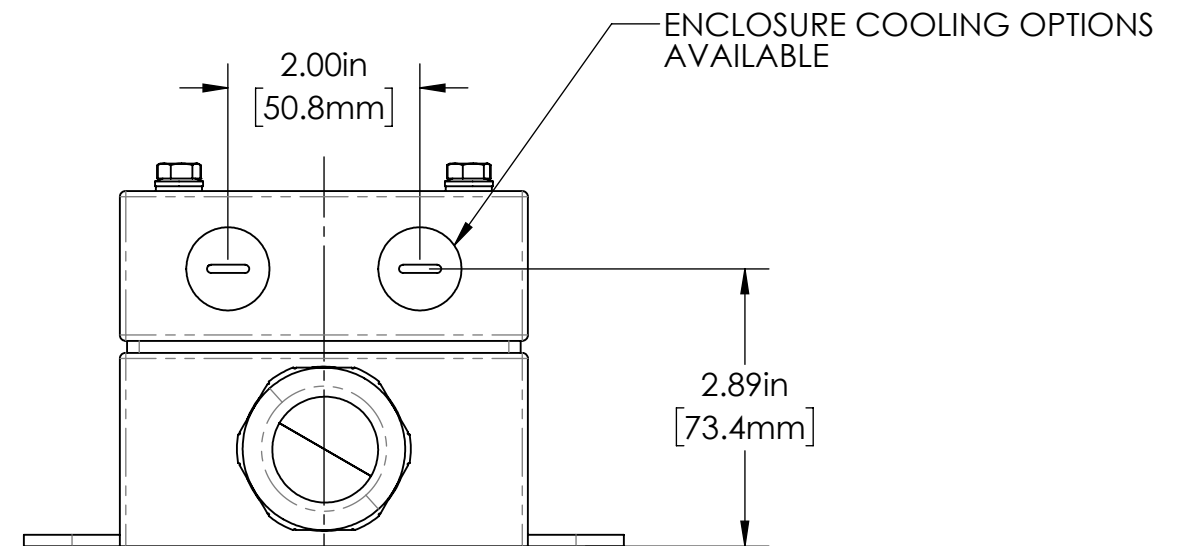
B

C

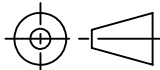
D



SECTION A-A



SECTION B-B

TOLERANCES UNLESS OTHERWISE SPECIFIED		APG Vision LLC		4055 Alpha Drive Allison Park, PA 15101 USA Phone +1 (412) 487-8211 apgvision.com	
MACHINING	SHEET METAL	DESCRIPTION:			
X.X 0.0250"	HOLE TO HOLE (SAME SURFACE)	L7 ENCLOSURE WITH STANDARD UPPER & LOWER, GLASS VIEWPORT, 47mm & 50mm O.C. ADAPTER			
X.XX 0.0100"	X.X 0.030"				
X.XXX 0.0050"	X.XX 0.010"				
X.XXXX 0.0005"	X.XXX 0.005"	MATERIAL: SEE BOM			
ANGULAR 0.5°	HOLE TO FOLDED EDGE				
DEBURR ALL	X.X 0.035"	FINISH: SEE BOM			
	X.XX 0.025"				
	X.XXX 0.015"				
	FOLD TO FOLD	DRAWN BY: GAS			
	X.X 0.045"				
	X.XX 0.035"				
X.XXX 0.020"	DATE: 3/11/2022	SCALE: 1:2	SHT-SIZE: B	APPROX. WEIGHT (LBS) 5.2322	
ANGULAR 1.0°		CHECKED BY: DMM	DATE: 3/11/2022	PART NUMBER: L7-AE	REVISION A
THIS PRINT IS THE PROPERTY OF APG VISION LLC. THE INFORMATION CONTAINED HEREIN IS CONFIDENTIAL. IT IS NOT TRANSFERABLE. IT IS FURNISHED WITH THE CLEAR UNDERSTANDING THAT IT IS NOT TO BE TRACED, REPRODUCED OR USED IN ANY PROCESS OF MANUFACTURING WITHOUT WRITTEN PERMISSION FROM THE OWNER AND IS RETURNABLE UPON DEMAND. ANY INFRINGEMENT UPON THE PATENT RIGHTS SHOWN HEREIN, WHETHER IN PART OR WHOLE, WILL BE PROSECUTED.		AS PART OF OUR POLICY OF CONTINUING DEVELOPMENT, APG VISION LLC RESERVES THE RIGHT TO ALTER SPECIFICATIONS WITHOUT PRIOR NOTICE.			
		Sheet2 of 2			