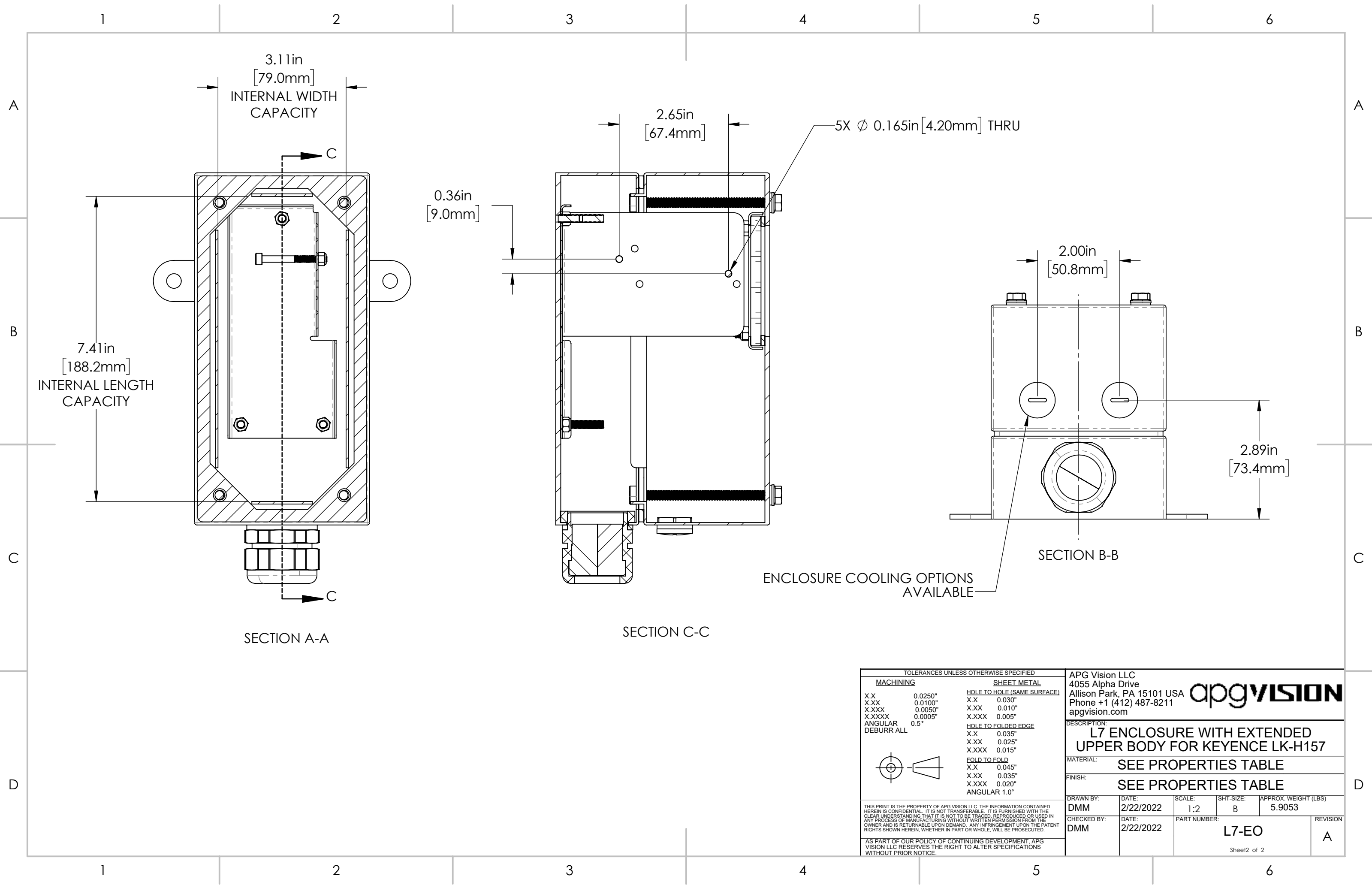


| REVISIONS | | | | |
|-----------|------|-------------------------|-----------|----------|
| ZONE | REV. | DESCRIPTION | DATE | APPROVED |
| | A | RELEASED FOR PRODUCTION | 2/22/2022 | DMM |

| L7 SERIES PROPERTIES TABLE | | |
|----------------------------|--|-----------|
| ENVIRONMENT RATING | IP68* | |
| | (*RATING MAY CHANGE IF INSTALLER MILLS CABLE GLAND OUTSIDE OF TOLERANCE) | |
| COMPONENT | MATERIAL | FINISH |
| BODY | 316 SS | BURNISHED |
| VIEWPORT | SODA LIME GLASS | NONE |
| GASKET | SILICONE | NONE |
| BRACKET | 5052 ALUM | NONE |
| HARDWARE | 316 SS - EXTERNAL, 18-8 SS - INTERNAL | |
| | | NONE |

| TOLERANCES UNLESS OTHERWISE SPECIFIED | | | |
|---------------------------------------|---------|-----------------------------|--------|
| MACHINING | | SHEET METAL | |
| X.X | 0.0250" | HOLE TO HOLE (SAME SURFACE) | |
| X.XX | 0.0100" | X.X | 0.030" |
| X.XXX | 0.0050" | X.XX | 0.010" |
| X.XXXX | 0.0005" | X.XXX | 0.005" |
| ANGULAR | 0.5° | HOLE TO FOLDED EDGE | |
| DEBURR ALL | | X.X | 0.035" |
| | | X.XX | 0.025" |
| | | X.XXX | 0.015" |
| | | FOLD TO FOLD | |
| | | X.X | 0.045" |
| | | X.XX | 0.035" |
| | | X.XXX | 0.020" |
| | | ANGULAR 1.0° | |

| | | | | |
|--|--------------------|------------------------------|----------------|--------------------------------|
| APG Vision LLC 4055 Alpha Drive Allison Park, PA 15101 USA Phone +1 (412) 487-8211 apgvision.com | | | | |
| DESCRIPTION: L7 ENCLOSURE WITH EXTENDED UPPER BODY FOR KEYENCE LK-H157 | | | | |
| MATERIAL: SEE PROPERTIES TABLE | | | | |
| FINISH: SEE PROPERTIES TABLE | | | | |
| DRAWN BY: DMM | DATE: 2/22/2022 | SCALE: 1:3 | SHT-SIZE: B | APPROX. WEIGHT (LBS) 5.9053 |
| CHECKED BY: DMM | DATE: 2/22/2022 | PART NUMBER: L7-EO | | REVISION A |



3.11in
[79.0mm]
INTERNAL WIDTH
CAPACITY

7.41in
[188.2mm]
INTERNAL LENGTH
CAPACITY

SECTION A-A

0.36in
[9.0mm]

SECTION C-C

2.65in
[67.4mm]

5X Ø 0.165in [4.20mm] THRU

2.00in
[50.8mm]

2.89in
[73.4mm]

SECTION B-B

ENCLOSURE COOLING OPTIONS
AVAILABLE

| TOLERANCES UNLESS OTHERWISE SPECIFIED | | | |
|---------------------------------------|---------|-----------------------------|--------|
| MACHINING | | SHEET METAL | |
| X.X | 0.0250" | HOLE TO HOLE (SAME SURFACE) | |
| X.XX | 0.0100" | X.X | 0.030" |
| X.XXX | 0.0050" | X.XX | 0.010" |
| X.XXXX | 0.0005" | X.XXX | 0.005" |
| ANGULAR | 0.5° | HOLE TO FOLDED EDGE | |
| DEBURR ALL | | X.X | 0.035" |
| | | X.XX | 0.025" |
| | | X.XXX | 0.015" |
| | | FOLD TO FOLD | |
| | | X.X | 0.045" |
| | | X.XX | 0.035" |
| | | X.XXX | 0.020" |
| | | ANGULAR | 1.0° |

THIS PRINT IS THE PROPERTY OF APG VISION LLC. THE INFORMATION CONTAINED HEREIN IS CONFIDENTIAL. IT IS NOT TRANSFERABLE. IT IS FURNISHED WITH THE CLEAR UNDERSTANDING THAT IT IS NOT TO BE TRACED, REPRODUCED OR USED IN ANY PROCESS OF MANUFACTURING WITHOUT WRITTEN PERMISSION FROM THE OWNER AND IS RETURNABLE UPON DEMAND. ANY INFRINGEMENT UPON THE PATENT RIGHTS SHOWN HEREIN, WHETHER IN PART OR WHOLE, WILL BE PROSECUTED.

AS PART OF OUR POLICY OF CONTINUING DEVELOPMENT, APG VISION LLC RESERVES THE RIGHT TO ALTER SPECIFICATIONS WITHOUT PRIOR NOTICE.

APG Vision LLC
4055 Alpha Drive
Allison Park, PA 15101 USA
Phone +1 (412) 487-8211
apgvision.com



DESCRIPTION:
**L7 ENCLOSURE WITH EXTENDED
UPPER BODY FOR KEYENCE LK-H157**

MATERIAL: **SEE PROPERTIES TABLE**

FINISH: **SEE PROPERTIES TABLE**

| | | | | |
|-----------|-----------|--------|-----------|----------------------|
| DRAWN BY: | DATE: | SCALE: | SHT-SIZE: | APPROX. WEIGHT (LBS) |
| DMM | 2/22/2022 | 1:2 | B | 5.9053 |

| | | | |
|-------------|-----------|--------------|----------|
| CHECKED BY: | DATE: | PART NUMBER: | REVISION |
| DMM | 2/22/2022 | L7-EO | A |