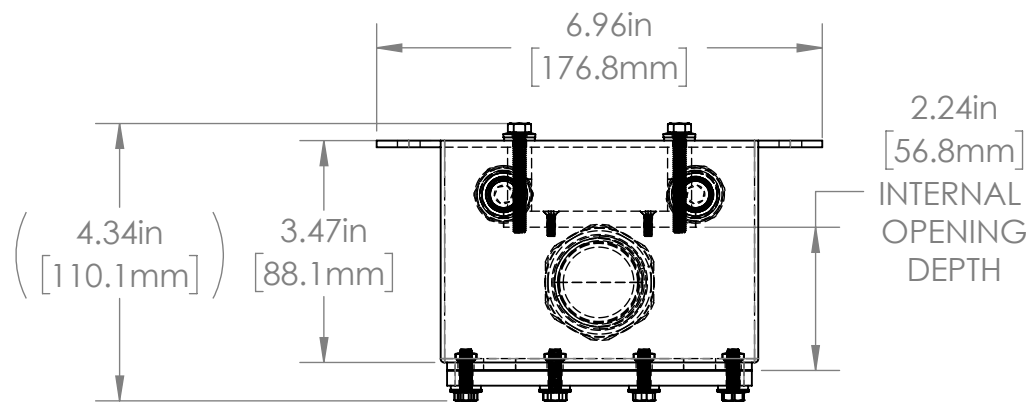


1 2 3 4 5 6

A

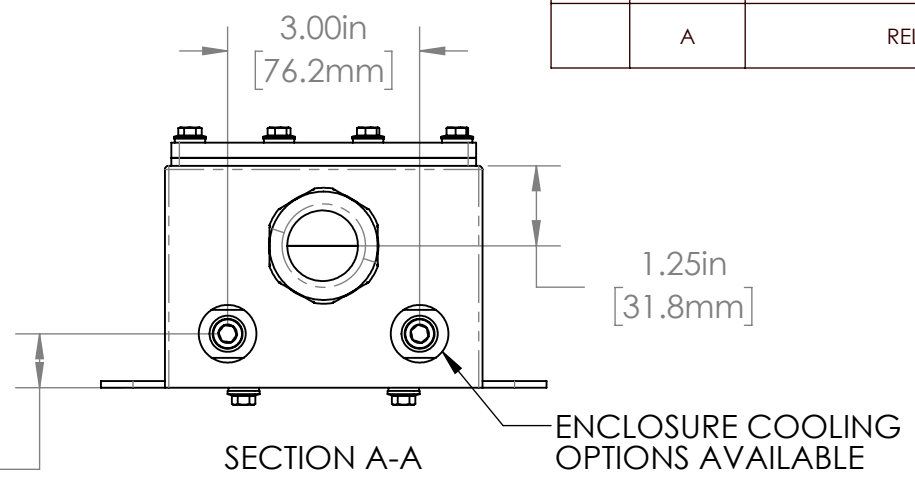


NOTE:
CAMERA HIDDEN FOR CLARITY

2.24in
[56.8mm]
INTERNAL
OPENING
DEPTH

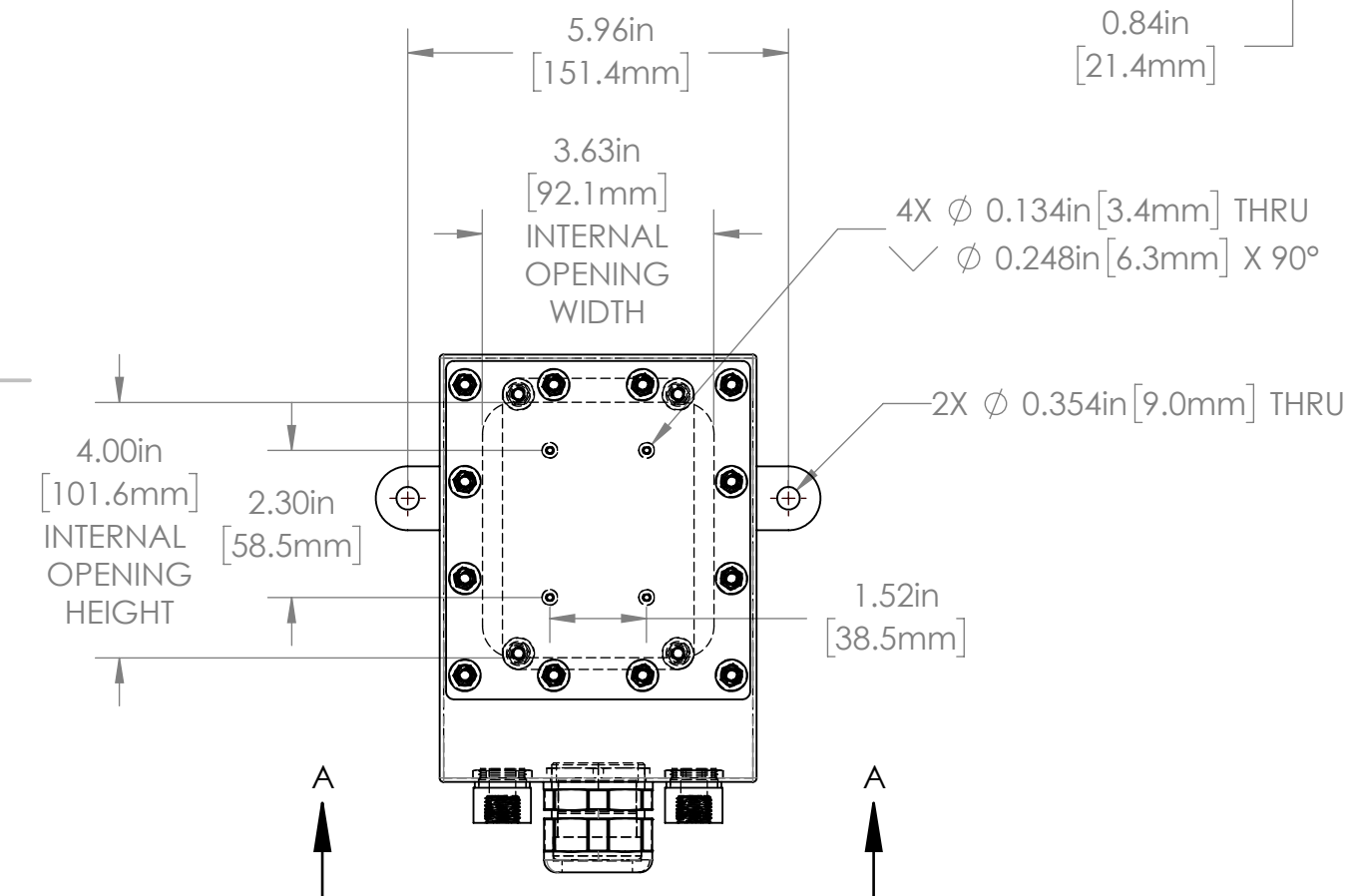
REVISIONS				
ZONE	REV.	DESCRIPTION	DATE	APPROVED
	A	RELEASED FOR PRODUCTION	5/2/2022	DMM

A

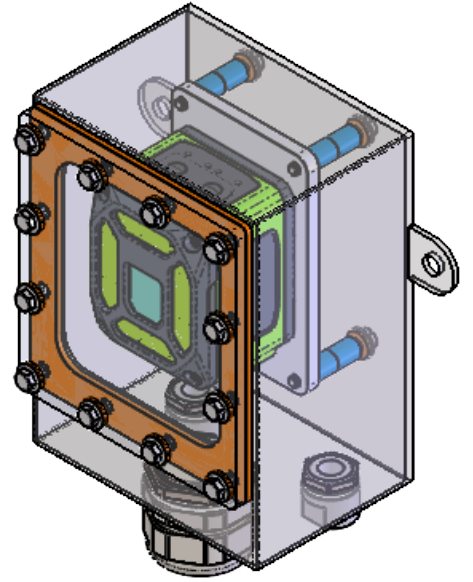


ENCLOSURE COOLING
OPTIONS AVAILABLE

B

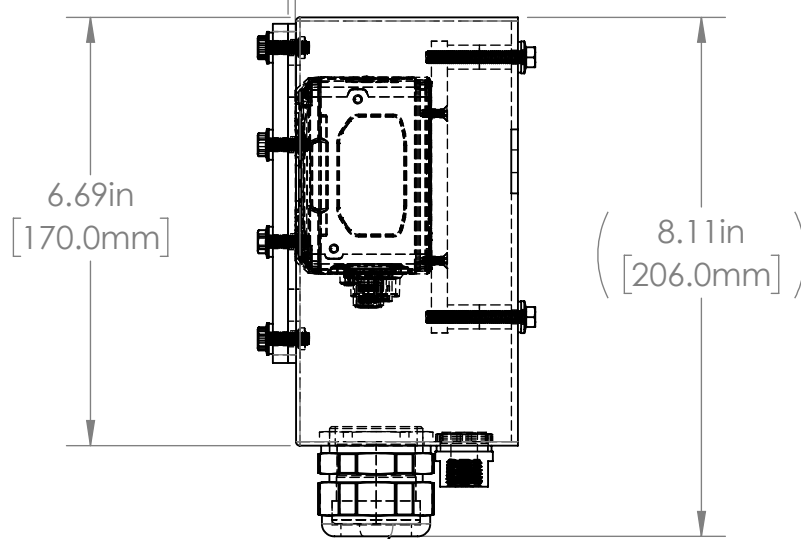


0.11in
[2.8mm]
DISTANCE TO WINDOW
ADJUSTABLE WITH SPACERS



B

C



PG29 CORD GRIP

C

LD SERIES PROPERTIES TABLE

ENVIRONMENT RATING	IP68*	FDA WASHDOWN
(*RATING MAY CHANGE IF INSTALLER MILLS CABLE GLAND OUTSIDE OF TOLERANCE)		
COMPONENT	MATERIAL	FINISH
BODY	316 SS	BURNISHED
VIEWPORT	CLEAR FLOWCOAT ACRYLIC	ABR2
GASKET	SILICONE	NONE
ARM/ADAPTOR	6061 ALUMINUM	NONE
HARDWARE	316 SS - EXTERNAL, 18-8 SS - INTERNAL	NONE

TOLERANCES UNLESS OTHERWISE SPECIFIED			
MACHINING		SHEET METAL	
X.X	0.0250"	HOLE TO HOLE (SAME SURFACE)	
X.XX	0.0100"	X.X	0.030"
X.XXX	0.0050"	X.XX	0.010"
X.XXXX	0.0005"	X.XXX	0.005"
ANGULAR	0.5°	HOLE TO FOLDED EDGE	
DEBURR ALL		X.X	0.035"
		X.XX	0.025"
		X.XXX	0.015"
		FOLD TO FOLD	
		X.X	0.045"
		X.XX	0.035"
		X.XXX	0.020"
		ANGULAR 1.0°	

APG Vision LLC
4055 Alpha Drive
Allison Park, PA 15101 USA
Phone +1 (412) 487-8211
apgvision.com



DESCRIPTION:
LD FDA WASHDOWN ENCLOSURE FOR ZEBRA FS40/VS40

MATERIAL: **SEE PROPERTIES TABLE**

FINISH: **SEE PROPERTIES TABLE**

DRAWN BY: **GAS** DATE: **4/29/2022** SCALE: **1:3** SHT-SIZE: **B** APPROX. WEIGHT (LBS): **4.4969**

CHECKED BY: **DMM** DATE: **5/2/2022** PART NUMBER: **LD-GA** REVISION: **A**

D

D

1 2 3 4 5 6