

A

B

C

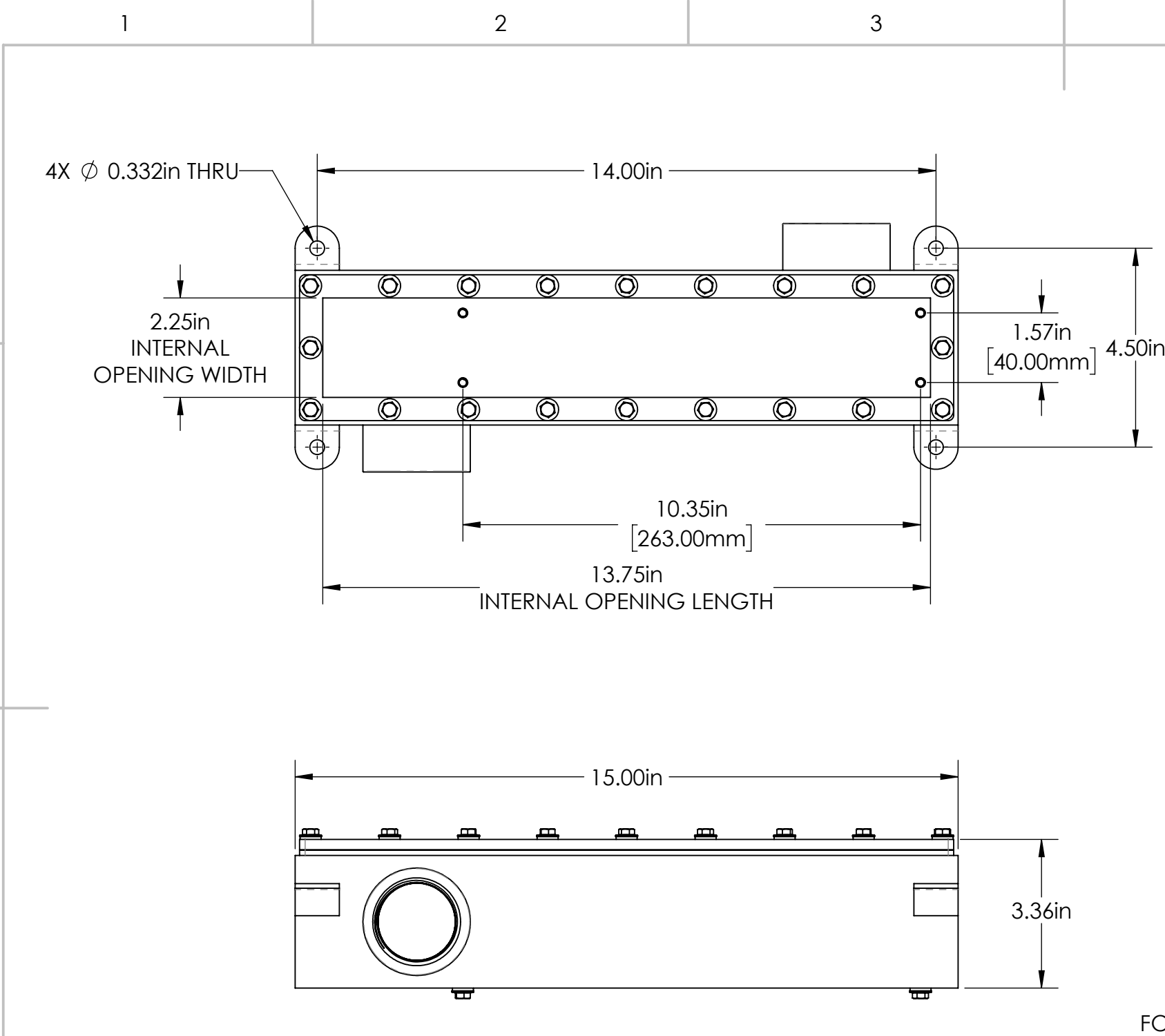
D

A

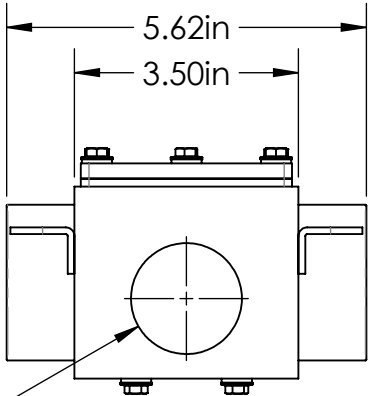
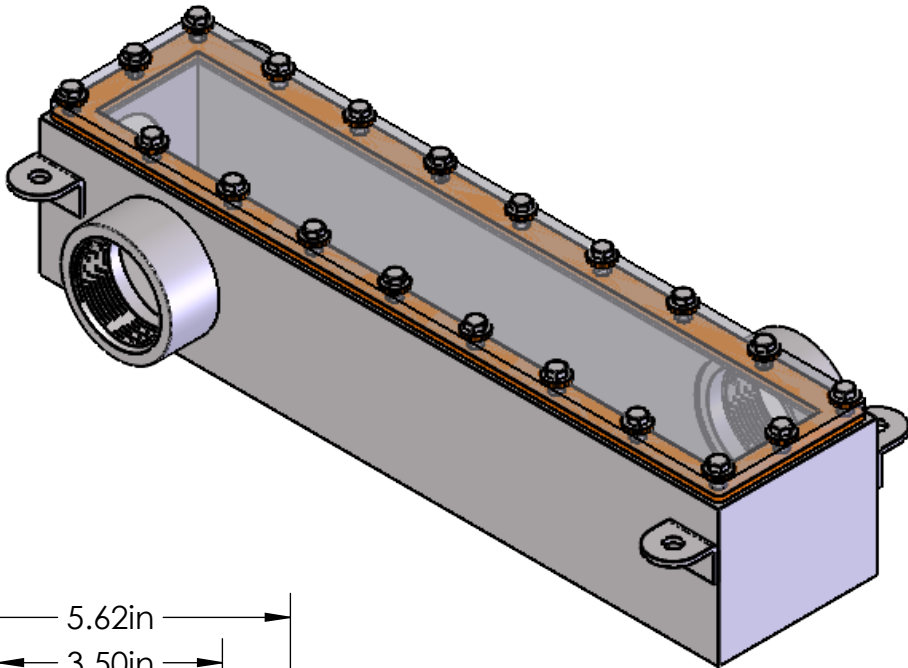
B

C

D



REVISIONS				
ZONE	REV.	DESCRIPTION	DATE	APPROVED
	A	RELEASED FOR PRODUCTION	11/9/2021	DMM



Ø 1.732in THRU  
FOR 1-1/4 CONDUIT

LL SERIES PROPERTIES TABLE		
ENVIRONMENT RATING	IP68*	
	(*RATING MAY CHANGE IF INSTALLER MILLS CABLE GLAND OUTSIDE OF TOLERANCE)	
COMPONENT	MATERIAL	FINISH
BODY	316 SS	BURNISHED
VIEWPORT	CLEAR POLYCARBONATE	AS SUPPLIED
GASKET	SILICONE	NONE
HARDWARE	316 SS	AS SUPPLIED

TOLERANCES UNLESS OTHERWISE SPECIFIED			APG Vision LLC 4055 Alpha Drive Allison Park, PA 15101 USA Phone +1 (412) 487-8211 apgvision.com			
MACHINING		SHEET METAL		DESCRIPTION:  LL ENCLOSURE WITH 2X 1-1/2 NPT FITTINGS, KNOCKOUT FOR 1-1/4 CONDUIT		
X.X	0.0250"	HOLE TO HOLE (SAME SURFACE)				
X.XX	0.0100"	X.X 0.030"		MATERIAL:  SEE PROPERTIES TABLE		
X.XXX	0.0050"	X.XX 0.010"				
X.XXXX	0.0005"	X.XXX 0.005"		FINISH:  SEE PROPERTIES TABLE		
ANGULAR	0.5°	HOLE TO FOLDED EDGE				
DEBURR ALL		X.X 0.035"		DRAWN BY: TWD		
		X.XX 0.025"				
		X.XXX 0.015"		DATE: 11/9/2021	SCALE: 1:3	
		FOLD TO FOLD		SHT-SIZE: B	APPROX. WEIGHT (LBS) 5.8229	
		X.X 0.045"		CHECKED BY: DMM		
		X.XX 0.035"				
		X.XXX 0.020"		DATE: 11/9/2021	PART NUMBER:  LL-CW	
		ANGULAR 1.0°		REVISION  A		
THIS PRINT IS THE PROPERTY OF APG VISION LLC. THE INFORMATION CONTAINED HEREIN IS CONFIDENTIAL. IT IS NOT TRANSFERABLE. IT IS FURNISHED WITH THE CLEAR UNDERSTANDING THAT IT IS NOT TO BE TRACED, REPRODUCED OR USED IN ANY PROCESS OF MANUFACTURING WITHOUT WRITTEN PERMISSION FROM THE OWNER AND IS RETURNABLE UPON DEMAND. ANY INFRINGEMENT UPON THE PATENT RIGHTS SHOWN HEREIN, WHETHER IN PART OR WHOLE, WILL BE PROSECUTED.			Sheet1 of 1			
AS PART OF OUR POLICY OF CONTINUING DEVELOPMENT, APG VISION LLC RESERVES THE RIGHT TO ALTER SPECIFICATIONS WITHOUT PRIOR NOTICE.						