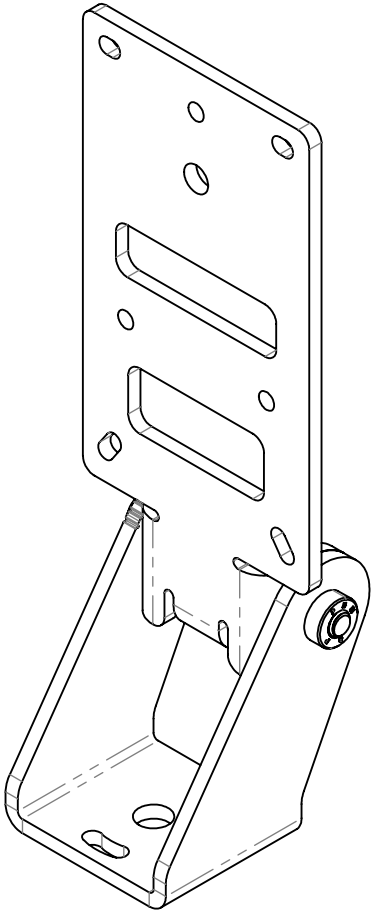
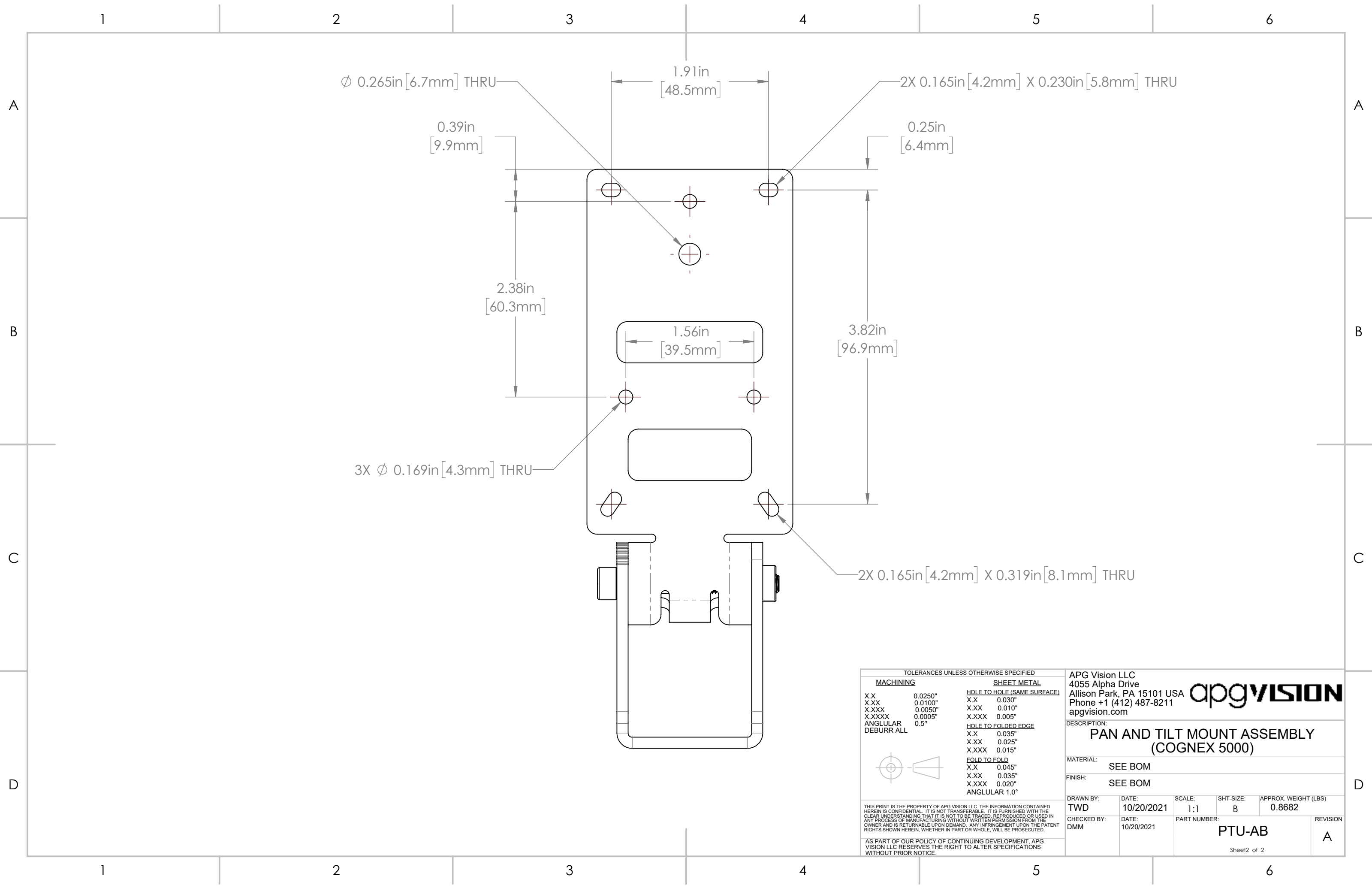


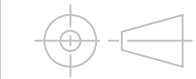
REVISIONS				
ZONE	REV.	DESCRIPTION	DATE	APPROVED
	A	RELEASED FOR PRODUCTION	10/20/2021	DMM



TOLERANCES UNLESS OTHERWISE SPECIFIED		APG Vision LLC 4055 Alpha Drive Allison Park, PA 15101 USA Phone +1 (412) 487-8211 apgvision.com					
<u>MACHINING</u>		<u>SHEET METAL</u>					
X.X	0.0250"	<u>HOLE TO HOLE (SAME SURFACE)</u>					
X.XX	0.0100"	X.X	0.030"				
X.XXX	0.0050"	X.XX	0.010"				
X.XXXX	0.0005"	X.XXX	0.005"				
ANGULAR	0.5°	<u>HOLE TO FOLDED EDGE</u>					
DEBURR ALL		X.X	0.035"				
		X.XX	0.025"				
		X.XXX	0.015"				
		<u>FOLD TO FOLD</u>					
		X.X	0.045"				
		X.XX	0.035"				
		X.XXX	0.020"				
		ANGULAR 1.0°					
THIS PRINT IS THE PROPERTY OF APG VISION LLC. THE INFORMATION CONTAINED HEREIN IS CONFIDENTIAL. IT IS NOT TRANSFERABLE. IT IS FURNISHED WITH THE CLEAR UNDERSTANDING THAT IT IS NOT TO BE TRACED, REPRODUCED OR USED IN ANY PROCESS OF MANUFACTURING WITHOUT WRITTEN PERMISSION FROM THE OWNER AND IS RETURNABLE UPON DEMAND. ANY INFRINGEMENT UPON THE PATENT RIGHTS SHOWN HEREIN, WHETHER IN PART OR WHOLE, WILL BE PROSECUTED.		<u>DESCRIPTION:</u>		PAN AND TILT MOUNT ASSEMBLY (COGNEX 5000)			
		<u>MATERIAL:</u>		SEE BOM			
		<u>FINISH:</u>		SEE BOM			
		<u>DRAWN BY:</u>		TWD			
AS PART OF OUR POLICY OF CONTINUING DEVELOPMENT, APG VISION LLC RESERVES THE RIGHT TO ALTER SPECIFICATIONS WITHOUT PRIOR NOTICE.		<u>DATE:</u>	10/20/2021	<u>SCALE:</u>	2:3		
		<u>SHT-SIZE:</u>	B	<u>APPROX. WEIGHT (LBS)</u>	0.8682		
		<u>CHECKED BY:</u>	DMM	<u>DATE:</u>	10/20/2021	<u>PART NUMBER:</u>	PTU-AB
		<u>REVISION</u>		A			
		Sheet1 of 2					



TOLERANCES UNLESS OTHERWISE SPECIFIED			
MACHINING		SHEET METAL	
X.X	0.0250"	HOLE TO HOLE (SAME SURFACE)	
X.XX	0.0100"	X.X	0.030"
X.XXX	0.0050"	X.XX	0.010"
X.XXXX	0.0005"	X.XXX	0.005"
ANGULAR	0.5°	HOLE TO FOLDED EDGE	
DEBURR ALL		X.X	0.035"
		X.XX	0.025"
		X.XXX	0.015"
		FOLD TO FOLD	
		X.X	0.045"
		X.XX	0.035"
		X.XXX	0.020"
		ANGULAR 1.0°	



THIS PRINT IS THE PROPERTY OF APG VISION LLC. THE INFORMATION CONTAINED HEREIN IS CONFIDENTIAL. IT IS NOT TRANSFERABLE. IT IS FURNISHED WITH THE CLEAR UNDERSTANDING THAT IT IS NOT TO BE TRACED, REPRODUCED OR USED IN ANY PROCESS OF MANUFACTURING WITHOUT WRITTEN PERMISSION FROM THE OWNER AND IS RETURNABLE UPON DEMAND. ANY INFRINGEMENT UPON THE PATENT RIGHTS SHOWN HEREIN, WHETHER IN PART OR WHOLE, WILL BE PROSECUTED.

AS PART OF OUR POLICY OF CONTINUING DEVELOPMENT, APG VISION LLC RESERVES THE RIGHT TO ALTER SPECIFICATIONS WITHOUT PRIOR NOTICE.

APG Vision LLC 4055 Alpha Drive Allison Park, PA 15101 USA Phone +1 (412) 487-8211 apgvision.com					
DESCRIPTION:					
PAN AND TILT MOUNT ASSEMBLY (COGNEX 5000)					
MATERIAL:		SEE BOM			
FINISH:		SEE BOM			
DRAWN BY:	DATE:	SCALE:	SHT-SIZE:	APPROX. WEIGHT (LBS)	
TWD	10/20/2021	1:1	B	0.8682	
CHECKED BY:	DATE:	PART NUMBER:			REVISION
DMM	10/20/2021	PTU-AB			A
Sheet2 of 2					