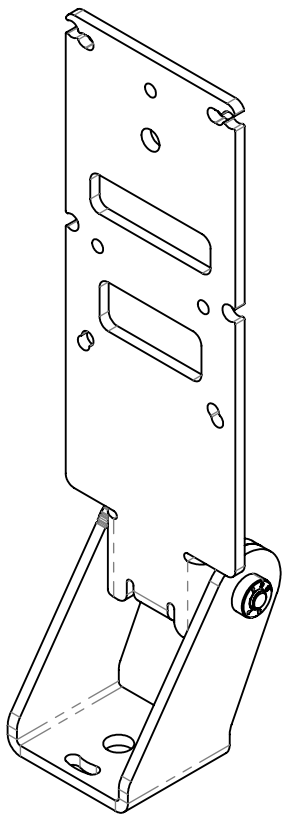



REVISIONS				
ZONE	REV.	DESCRIPTION	DATE	APPROVED
	A	RELEASED FOR PRODUCTION	11/9/2021	DMM

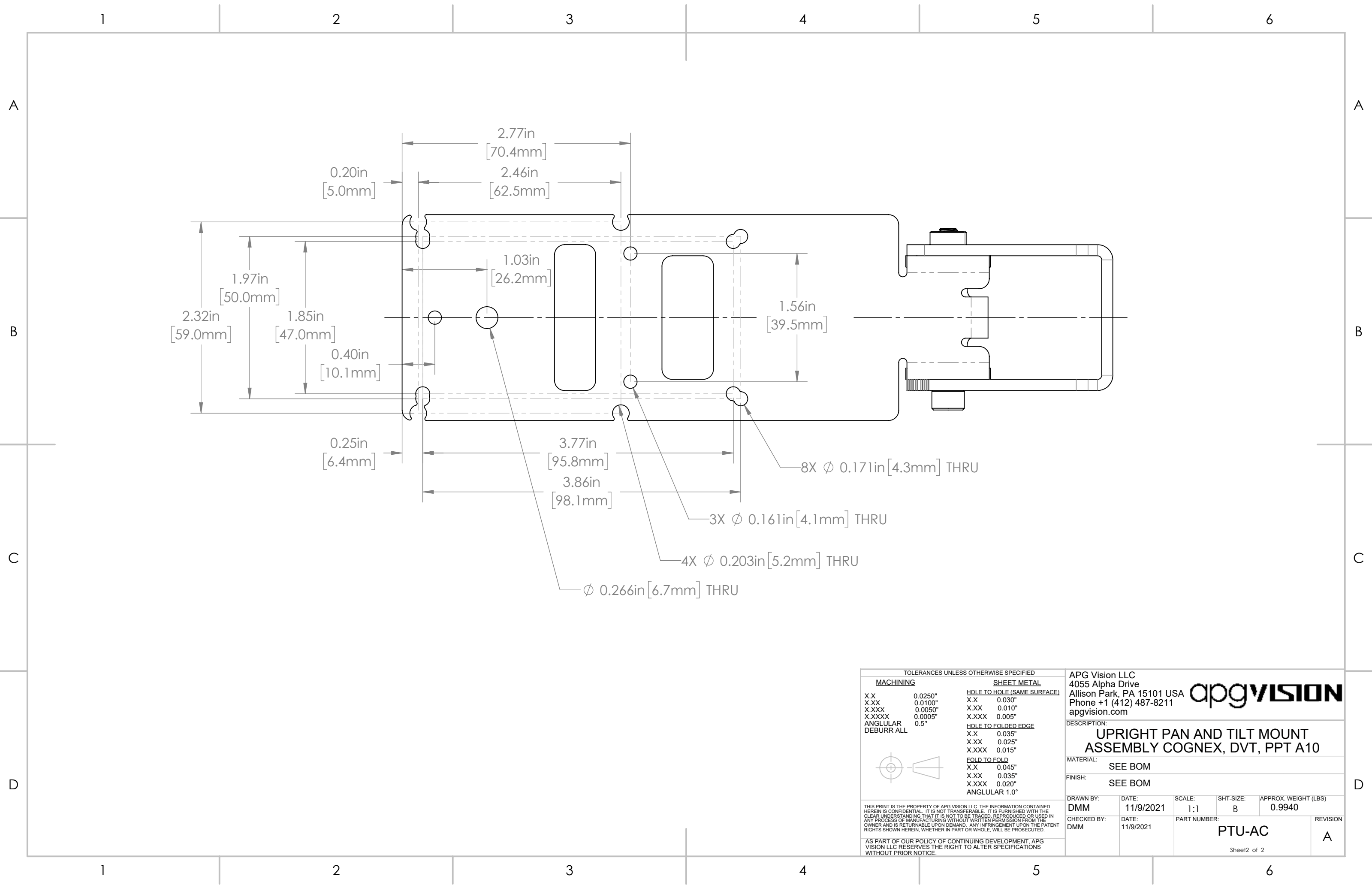



PTU SERIES PROPERTIES TABLE

COMPONENT	MATERIAL	FINISH
BASE/ADAPTER	304 STAINLESS STEEL	BURNISHED
HARDWARE	18-8 SS	NONE

TOLERANCES UNLESS OTHERWISE SPECIFIED			
MACHINING		SHEET METAL	
X.X	0.0250"	HOLE TO HOLE (SAME SURFACE)	
X.XX	0.0100"	X.X	0.030"
X.XXX	0.0050"	X.XX	0.010"
X.XXXX	0.0005"	X.XXX	0.005"
ANGULAR	0.5°	HOLE TO FOLDED EDGE	
DEBURR ALL		X.X	0.035"
		X.XX	0.025"
		X.XXX	0.015"
		FOLD TO FOLD	
		X.X	0.045"
		X.XX	0.035"
		X.XXX	0.020"
		ANGULAR 1.0°	

APG Vision LLC 4055 Alpha Drive Allison Park, PA 15101 USA Phone +1 (412) 487-8211 apgvision.com				
DESCRIPTION: UPRIGHT PAN AND TILT MOUNT ASSEMBLY COGNEX, DVT, PPT A10				
MATERIAL:		SEE BOM		
FINISH:		SEE BOM		
DRAWN BY:	DATE:	SCALE:	SHT-SIZE:	APPROX. WEIGHT (LBS)
DMM	11/9/2021	1:2	B	0.9940
CHECKED BY:	DATE:	PART NUMBER:		REVISION
DMM	11/9/2021	PTU-AC		A
Sheet 1 of 2				



TOLERANCES UNLESS OTHERWISE SPECIFIED		APG Vision LLC		apgvision.com			
MACHINING		SHEET METAL					
X.X	0.0250"	HOLE TO HOLE (SAME SURFACE)					
X.XX	0.0100"	X.X	0.030"	4055 Alpha Drive Allison Park, PA 15101 USA Phone +1 (412) 487-8211 apgvision.com			
X.XXX	0.0050"	X.XX	0.010"				
X.XXXX	0.0005"	X.XXX	0.005"				
ANGULAR	0.5°	HOLE TO FOLDED EDGE		DESCRIPTION: UPRIGHT PAN AND TILT MOUNT ASSEMBLY COGNEX, DVT, PPT A10			
DEBURR ALL		X.X	0.035"				
		X.XX	0.025"				
		X.XXX	0.015"	MATERIAL: SEE BOM			
		FOLD TO FOLD					
		X.X	0.045"				
		X.XX	0.035"	FINISH: SEE BOM			
		X.XXX	0.020"				
		ANGULAR 1.0°					
		DRAWN BY:		DATE:	SCALE:	SHT-SIZE:	APPROX. WEIGHT (LBS)
		DMM		11/9/2021	1:1	B	0.9940
		CHECKED BY:		DATE:	PART NUMBER:		REVISION
THIS PRINT IS THE PROPERTY OF APG VISION LLC. THE INFORMATION CONTAINED HEREIN IS CONFIDENTIAL. IT IS NOT TRANSFERABLE. IT IS FURNISHED WITH THE CLEAR UNDERSTANDING THAT IT IS NOT TO BE TRACED, REPRODUCED OR USED IN ANY PROCESS OF MANUFACTURING WITHOUT WRITTEN PERMISSION FROM THE OWNER AND IS RETURNABLE UPON DEMAND. ANY INFRINGEMENT UPON THE PATENT RIGHTS SHOWN HEREIN, WHETHER IN PART OR WHOLE, WILL BE PROSECUTED.		DMM		11/9/2021	PTU-AC		A
		AS PART OF OUR POLICY OF CONTINUING DEVELOPMENT, APG VISION LLC RESERVES THE RIGHT TO ALTER SPECIFICATIONS WITHOUT PRIOR NOTICE.		Sheet 2 of 2			