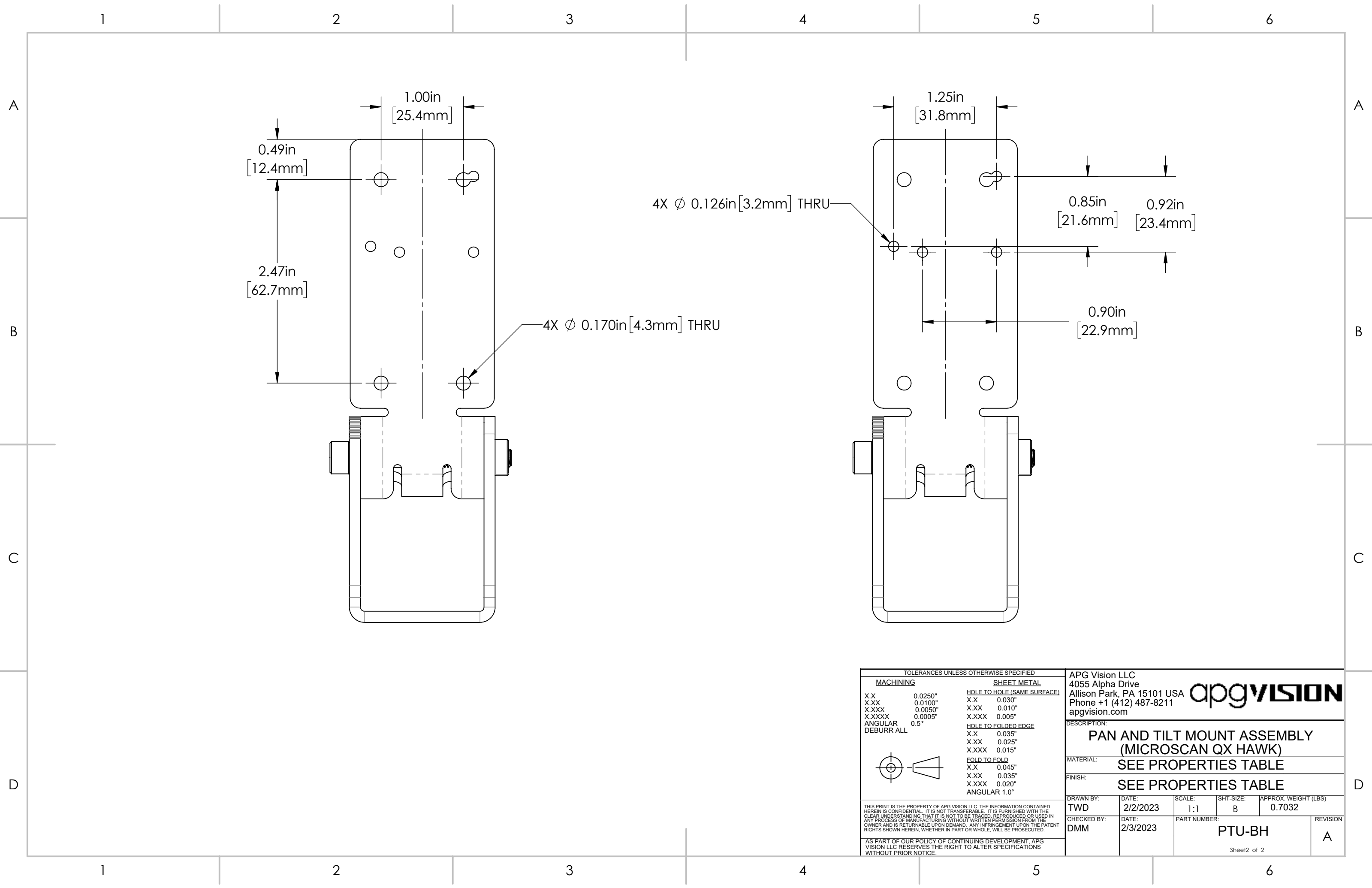


REVISIONS				
ZONE	REV.	DESCRIPTION	DATE	APPROVED
	A	RELEASED FOR PRODUCTION	2/3/2023	DMM

TOLERANCES UNLESS OTHERWISE SPECIFIED		APG Vision LLC 4055 Alpha Drive Allison Park, PA 15101 USA Phone +1 (412) 487-8211 apgvision.com		apgvision	
MACHINING	SHEET METAL	DESCRIPTION:			
X.X 0.0250"	HOLE TO HOLE (SAME SURFACE)	PAN AND TILT MOUNT ASSEMBLY (MICROSCAN QX HAWK)			
X.XX 0.0100"	X.X 0.030"	MATERIAL:			
X.XXX 0.0050"	X.XX 0.010"	SEE PROPERTIES TABLE			
X.XXXX 0.0005"	X.XXX 0.005"	FINISH:			
ANGULAR 0.5°	HOLE TO FOLDED EDGE	SEE PROPERTIES TABLE			
DEBURR ALL	X.X 0.035"	DRAWN BY:			
	X.XX 0.025"	DATE:	SCALE:	SHT-SIZE:	APPROX. WEIGHT (LBS)
	X.XXX 0.015"	2/2/2023	2:3	B	0.7032
	FOLD TO FOLD	CHECKED BY:			
	X.X 0.045"	DATE:	PART NUMBER:		
	X.XX 0.035"	2/3/2023	PTU-BH		
X.XXX 0.020"	ANGULAR 1.0°	REVISION			
	THIS PRINT IS THE PROPERTY OF APG VISION LLC. THE INFORMATION CONTAINED HEREIN IS CONFIDENTIAL. IT IS NOT TRANSFERABLE. IT IS FURNISHED WITH THE CLEAR UNDERSTANDING THAT IT IS NOT TO BE TRACED, REPRODUCED OR USED IN ANY PROCESS OF MANUFACTURING WITHOUT WRITTEN PERMISSION FROM THE OWNER AND IS RETURNABLE UPON DEMAND. ANY INFRINGEMENT UPON THE PATENT RIGHTS SHOWN HEREIN, WHETHER IN PART OR WHOLE, WILL BE PROSECUTED.				
	AS PART OF OUR POLICY OF CONTINUING DEVELOPMENT, APG VISION LLC RESERVES THE RIGHT TO ALTER SPECIFICATIONS WITHOUT PRIOR NOTICE.				
	Sheet1 of 2				



TOLERANCES UNLESS OTHERWISE SPECIFIED			
MACHINING		SHEET METAL	
X.X	0.0250"	HOLE TO HOLE (SAME SURFACE)	
X.XX	0.0100"	X.X	0.030"
X.XXX	0.0050"	X.XX	0.010"
X.XXXX	0.0005"	X.XXX	0.005"
ANGULAR	0.5°	HOLE TO FOLDED EDGE	
DEBURR ALL		X.X	0.035"
		X.XX	0.025"
		X.XXX	0.015"
		FOLD TO FOLD	
		X.X	0.045"
		X.XX	0.035"
		X.XXX	0.020"
		ANGULAR	1.0°
THIS PRINT IS THE PROPERTY OF APG VISION LLC. THE INFORMATION CONTAINED HEREIN IS CONFIDENTIAL. IT IS NOT TRANSFERABLE. IT IS FURNISHED WITH THE CLEAR UNDERSTANDING THAT IT IS NOT TO BE TRACED, REPRODUCED OR USED IN ANY PROCESS OF MANUFACTURING WITHOUT WRITTEN PERMISSION FROM THE OWNER AND IS RETURNABLE UPON DEMAND. ANY INFRINGEMENT UPON THE PATENT RIGHTS SHOWN HEREIN, WHETHER IN PART OR WHOLE, WILL BE PROSECUTED.			
AS PART OF OUR POLICY OF CONTINUING DEVELOPMENT, APG VISION LLC RESERVES THE RIGHT TO ALTER SPECIFICATIONS WITHOUT PRIOR NOTICE.			
APG Vision LLC 4055 Alpha Drive Allison Park, PA 15101 USA Phone +1 (412) 487-8211 apgvision.com			
DESCRIPTION: PAN AND TILT MOUNT ASSEMBLY (MICROSCAN QX HAWK)			
MATERIAL: SEE PROPERTIES TABLE			
FINISH: SEE PROPERTIES TABLE			
DRAWN BY: TWD	DATE: 2/2/2023	SCALE: 1:1	SHT-SIZE: B
CHECKED BY: DMM	DATE: 2/3/2023	PART NUMBER: PTU-BH	APPROX. WEIGHT (LBS): 0.7032
			REVISION: A