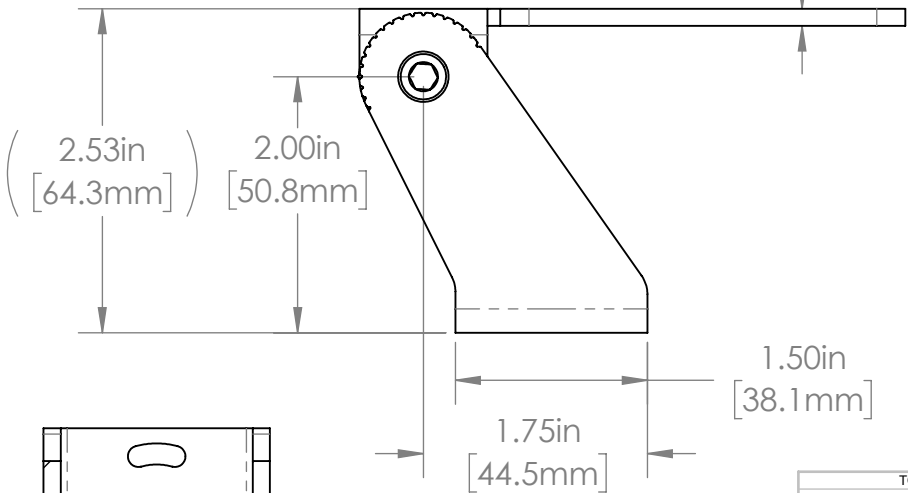
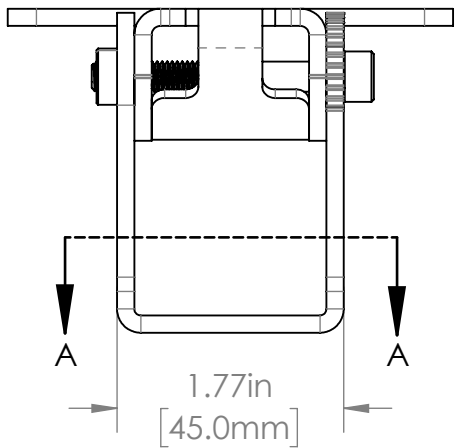
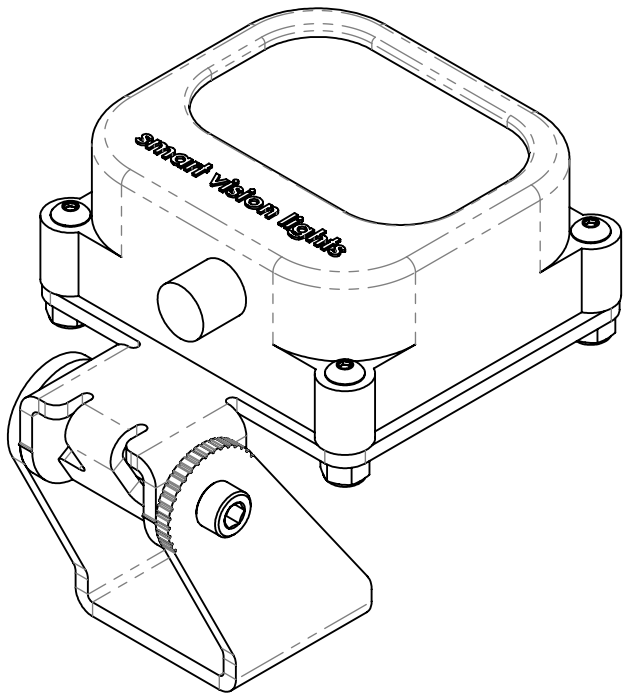


REVISIONS				
ZONE	REV.	DESCRIPTION	DATE	APPROVED
	A	RELEASED FOR PRODUCTION	11/10/2021	DMM



Ø 0.323in [8.2mm] THRU

SECTION A-A

TOLERANCES UNLESS OTHERWISE SPECIFIED			
MACHINING		SHEET METAL	
X.X	0.0250"	HOLE TO HOLE (SAME SURFACE)	
X.XX	0.0100"	X.X	0.030"
X.XXX	0.0050"	X.XX	0.010"
X.XXXX	0.0005"	X.XXX	0.005"
ANGULAR	0.5°	HOLE TO FOLDED EDGE	
DEBURR ALL		X.X	0.035"
		X.XX	0.025"
		X.XXX	0.015"
		FOLD TO FOLD	
		X.X	0.045"
		X.XX	0.035"
		X.XXX	0.020"
		ANGULAR	1.0°

APG Vision LLC 4055 Alpha Drive Allison Park, PA 15101 USA Phone +1 (412) 487-8211 apgvision.com				
DESCRIPTION: <b>PAN AND TILT MOUNT ASSEMBLY (SMART VISION LIGHTS S75)</b>				
MATERIAL: <b>SEE BOM</b>				
FINISH: <b>SEE BOM</b>				
DRAWN BY: <b>GAS</b>	DATE: <b>11/10/2021</b>	SCALE: <b>2:3</b>	SHT-SIZE: <b>B</b>	APPROX. WEIGHT (LBS) <b>1.0423</b>
CHECKED BY: <b>DMM</b>	DATE: <b>11/10/2021</b>	PART NUMBER: <b>PTU-LD</b>		REVISION <b>A</b>