

25R Series

The 25R Series enclosure is a compact, high performance enclosure for small cameras, lasers, or sensors with a diameter of up to 30 x 30mm. It is constructed completely out of 316 stainless steel for maximum corrosion resistance.

Product Features

- Fixed mount
- Available in two standard barrel lengths: 152.4 and 190.5mm
- Custom lengths available

Construction

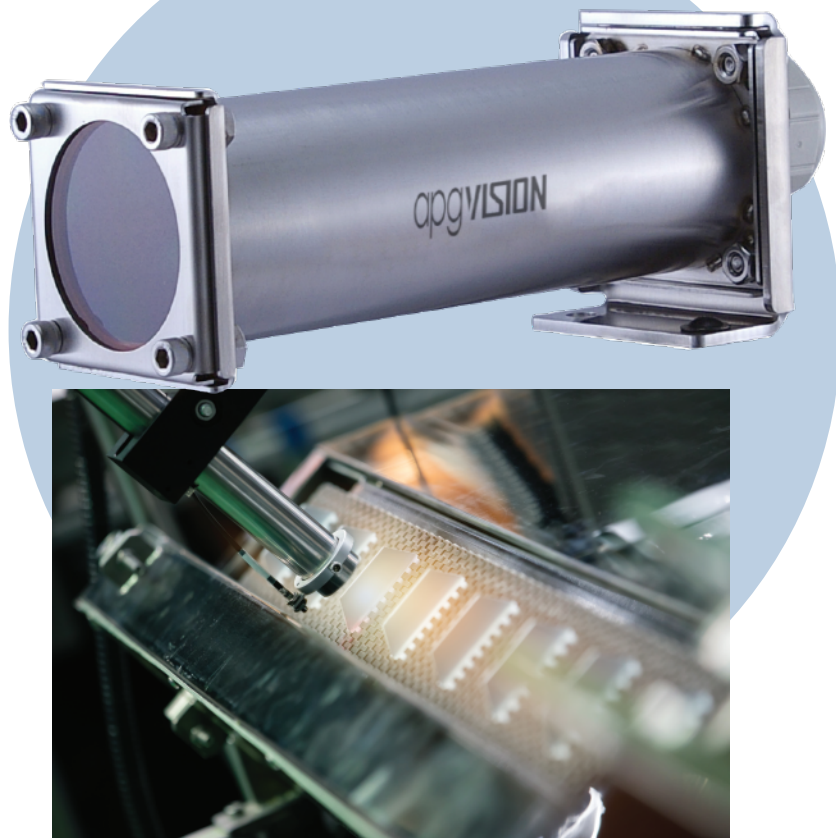
- 316 stainless steel construction
- Tumbled polish finish

Environment

- NEMA 6/IP67

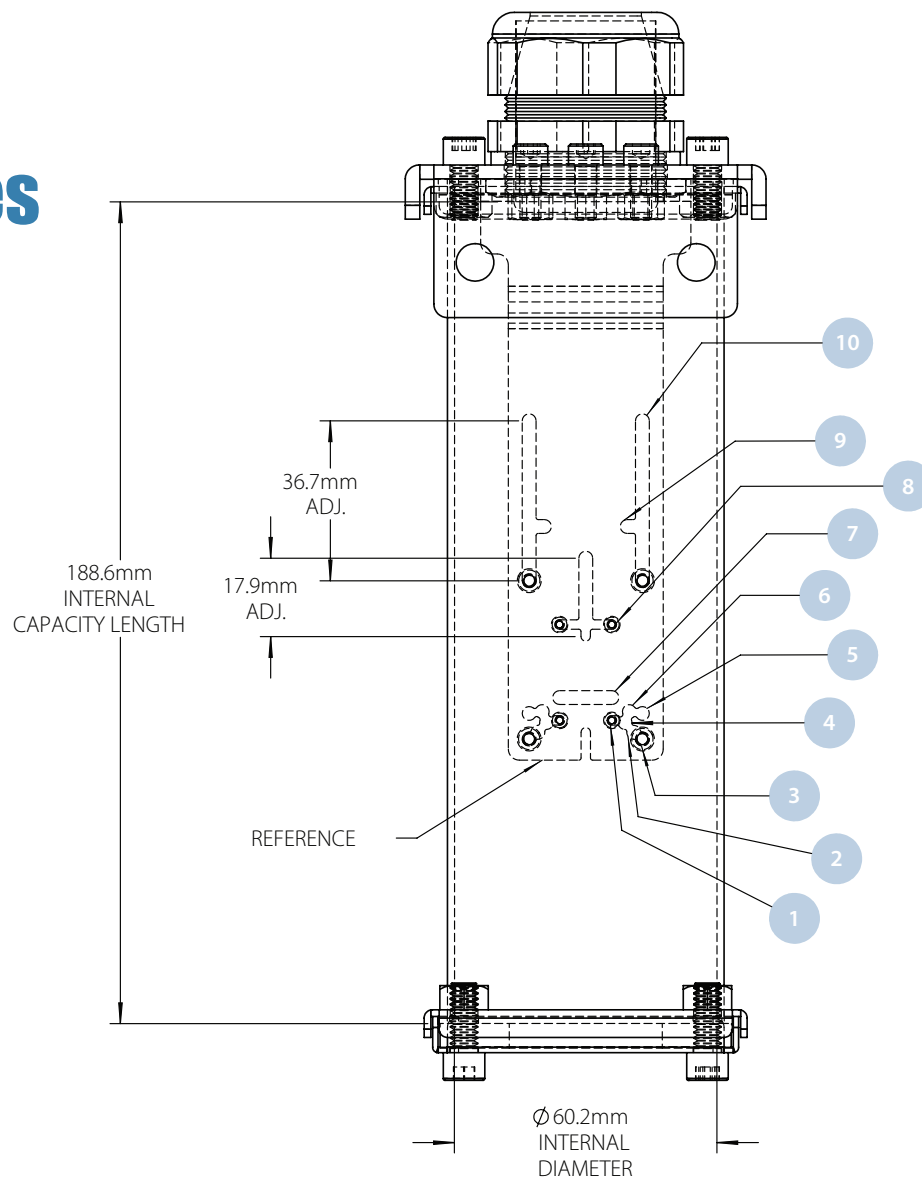
Accessories

- Sun shield



Camera and Lens Size Viewing Window				
Universal Models	Camera Mounting	Viewport	Viewing Area	Cable Entry
Model 25R-AH Length: 195mm Net weight: 1.2 kg (2.6 lbs), Gross weight: 1.4 kg (3 lbs)	Universal camera mount	Soda Lime glass	58mm Dia.	PG29 Split cable gland
Model 25R-AK Length: 245mm Net weight: 1.2 kg (2.6 lbs), Gross weight: 1.4 kg (3 lbs)	Universal camera mount	Soda Lime glass	58mm Dia.	PG29 Split cable gland
Camera Specific Models	Camera mounting			
Model 25R-EN Length: 208mm Net weight: 1.2 kg (2.6 lbs), Gross weight: 1.4 kg (3 lbs)	Keyence CV-020	Soda Lime glass	58mm Dia.	PG29 Split cable gland

25R Series



Item Number	Fastener Size, metric	Hole Spacing Across Width, mm	Distance from Reference, mm
1	M2	11.96	9.1
2	M3	22	6.4
3	M3	26	4.8
4	M3	18	8.6
5	M3	26	10.7
6	M3	20	11.1
7	M3	12	13.6
8	M2	12	31.1
9	M3	19	53.6
10	M3	26	Slot DIM. Above

apgVISION

4055 Alpha Drive • Allison Park, PA 15101
www.apgvision.com