

## CC Series

The CC Series enclosure is designed to house up to 30 x 30mm cross section inline cameras, lasers, or sensors. Engineered for high temperature environments with ambient temperatures of up to 550°F (287°C).

### Product Features

- Liquid or air cooled
- Rugged
- Anti-corrosive

### Construction

- 316 stainless steel body and fasteners
- Tumbled polish finish

### Environment

- Speciality/High temperature

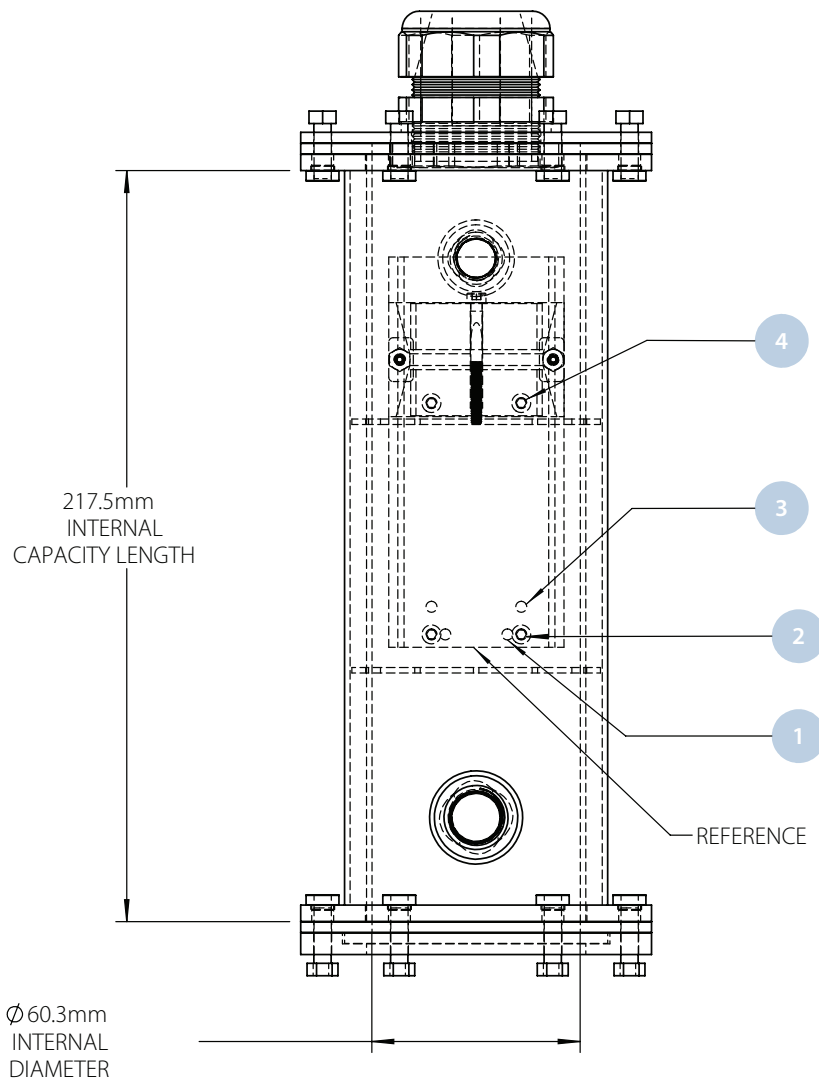
### Accessories

- Hot mirror glass
- Heat shield



Universal Models	Camera and Lens Size Viewing Window			
	Camera Mounting	Viewport	Viewing Area	Cable Entry
Model CC-AF length: 279mm Net weight: 2.6 kg (5.1 lbs), Gross weight: 3.1 kg (6.8 lbs)	Universal camera mount	Soda Lime glass	60mm Dia.	PG29 Split cable gland
Camera Specific Models	Camera Mounting			
Model CC-AG length: 152mm	Cognex 5000/Matrox GT	Soda Lime glass	63mm Dia.	PG29 Split cable gland

# CC Series



Item Number	Fastener Size, metric	Hole Spacing Across Width, mm	Distance from Reference, mm
1	M3	18	3.7
2	M3	26	3.7
3	M3	26	11.7
4	M3	26	70.1

**apgv**VISION

4055 Alpha Drive • Allison Park, PA 15101  
[www.apgvision.com](http://www.apgvision.com)