

LD Series

apg

Allison Park Group, Inc.

The LD Series enclosure is a 316 stainless steel housing for upright cameras, lasers, or sensors. Designed to work in highly corrosive environments, it also is designed to work in food applications, with care taken to reduce pockets where water might sit.

Product Features

- All 316 stainless construction
- Designed for highly corrosive environments
- Constructed of food safe materials for FDA washdown/food applications
- IP69K option
- Split cable gland designed for premade cables

Construction

- 316 stainless steel body, base, and fasteners
- Tumbled polish finish

Environment

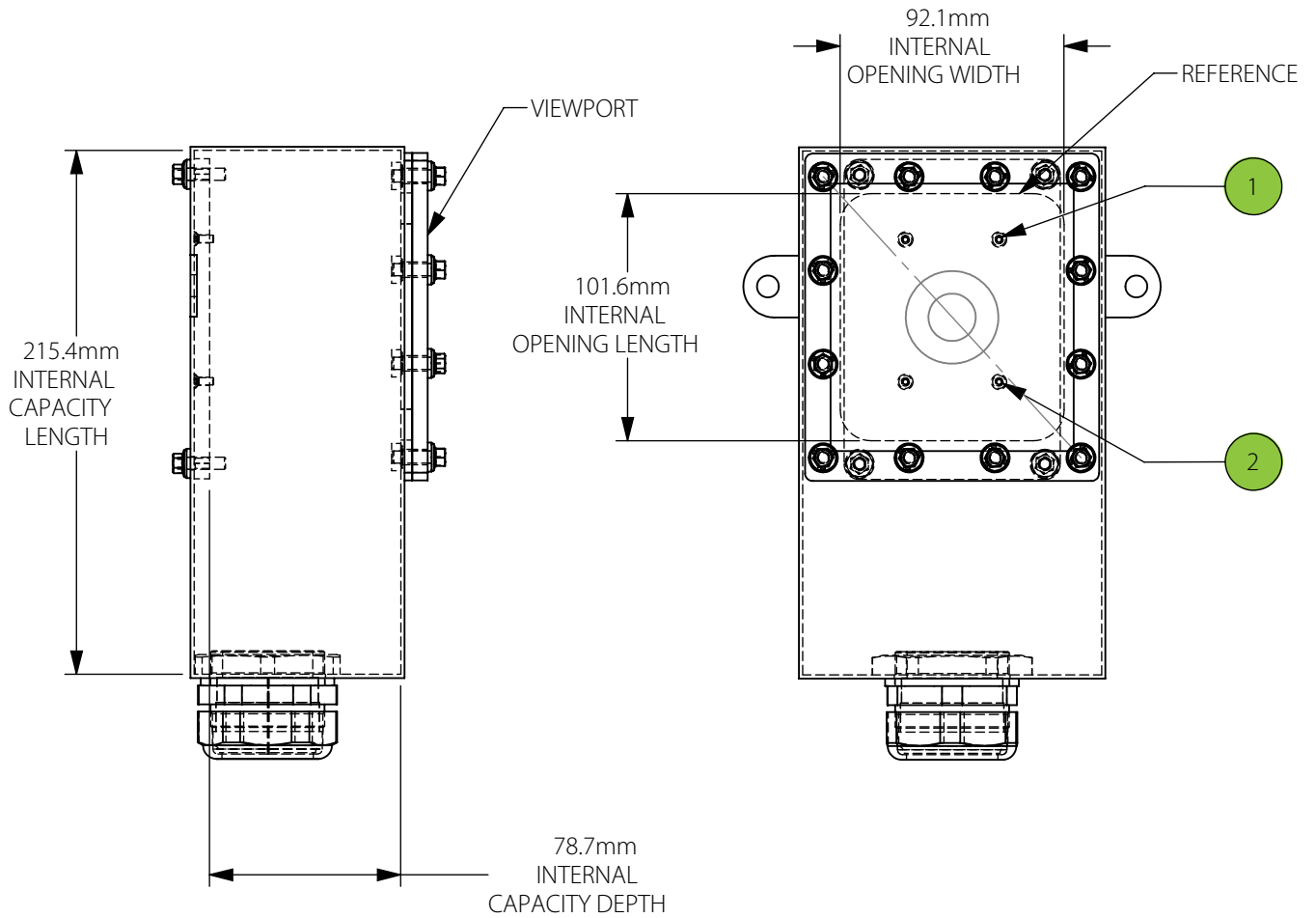
- NEMA 6/IP68



Camera and Lens Size Viewing Window

Camera Specific Models	Camera Mounting	Viewport	Viewing Area	Cable Entry
Model LD-AJ Length: 139.7mm Net weight: 0.7 kg (1.5 lbs), Gross weight: 0.8 kg (1.8 lbs)	Balluff BVS	Abrasion resistant optical grade acrylic	76x 58mm	PG36 Split cable gland
Model LD-AR Length: 168.7mm Net weight: 0.9 kg (2.1 lbs), Gross weight: 1.4 kg (3 lbs)	Cognex 7000	Abrasion resistant optical grade acrylic	82x 57mm	PG36 Split cable gland
Model LD-DN Length: 218.4mm Net weight: 1.9 kg (4.1lbs), Gross weight: 2.3 kg (5 lbs)	Cognex 7000 G2	Abrasion resistant optical grade acrylic	92x 101mm	PG36 Split cable gland

LD Series



Item Number	Fastener Size, metric	Hole Spacing Across Width, mm	Distance from Reference, mm
1	M3	38.5	32.9
2	M3	30.5	91.5

4055 Alpha Drive, Allison Park, PA 15101
www.apgvision.com

412.487.8211

Fax: 412.486.3157



Allison Park Group, Inc.